

PARTS LIST

CAUTION

- The parts identified by the \triangle symbol are important for the safety . Whenever replacing these parts, be sure to use specified ones to secure the safety .
- The parts not indicated in this Parts List and those which are filled with lines --- in the Parts No. columns will not be supplied .
- P. W. Board Ass'y will not be supplied, but those which are filled with the Parts No. in the Parts No. columns will be supplied .

ABBREVIATIONS OF RESISTORS, CAPACITORS AND TOLERANCES

| RESISTORS | | CAPACITORS | |
|-----------|--|-----------------|---|
| C R | Carbon Resistor | C CAP. | Ceramic Capacitor |
| F R | Fusible Resistor | E CAP. | Electrolytic Capacitor |
| P R | Plate Resistor | M CAP. | Mylar Capacitor |
| V R | Variable Resistor | CH CAP. | Chip Capacitor |
| HV R | High Voltage Resistor | HV CAP. | High Voltage Capacitor |
| MF R | Metal Film Resistor | MF CAP. | Metalized Film Capacitor |
| MG R | Metal Glazed Resistor | MM CAP. | Metalized Mylar Capacitor |
| MP R | Metal Plate Resistor | MP CAP. | Metalized Polystyrol Capacitor |
| OM R | Metal Oxide Film Resistor | PP CAP. | Polypropylene Capacitor |
| CMF R | Coating Metal Film Resistor | PS CAP. | Polystyrol Capacitor |
| UNF R | Non-Flammable Resistor | TF CAP. | Thin Film Capacitor |
| CH V R | Chip Variable Resistor | MPP CAP. | Metalized Polypropylene Capacitor |
| CH MG R | Chip Metal Glazed Resistor | TAN. CAP. | Tantalum Capacitor |
| COMP. R | Composition Resistor | CH C CAP. | Chip Ceramic Capacitor |
| LPTC R | Linear Positive Temperature Coefficient Resistor | BP E CAP. | Bi-Polar Electrolytic Capacitor |
| | | CH AL E CAP. | Chip Aluminum Electrolytic Capacitor |
| | | CH AL BP CAP. | Chip Aluminum Bi-Polar Capacitor |
| | | CH TAN. E CAP. | Chip Tantalum Electrolytic Capacitor |
| | | CH AL BP E CAP. | Chip Tantalum Bi-Polar Electrolytic Capacitor |

| RESISTORS | | | | | | | | | |
|-----------|-----|-----|------|------|------|--------------|--------------|--------------|-------------|
| F | G | J | K | M | N | R | H | Z | P |
| ±1% | ±2% | ±5% | ±10% | ±20% | ±30% | +30% -10% | +50% -10% | +80% -20% | +100% 0% |

CONTENTS

| | |
|---|----|
| USING P.W. BOARD & REMOTE CONTROL UNIT | 43 |
| EXPLODED VIEW PARTS LIST -I [AV-20N83/BK, AV-20N83/VT] | 43 |
| EXPLODED VIEW -I [AV-20N83/BK, AV-20N83/VT] | 43 |
| EXPLODED VIEW PARTS LIST -II [AV-20N83/BK, AV-20N83/VT] | 44 |
| EXPLODED VIEW -II [AV-20N83/BK, AV-20N83/VT] | 45 |
| EXPLODED VIEW PARTS LIST -III [AV-21D83/BK, AV-21D83/VT] | 46 |
| EXPLODED VIEW -III [AV-21D83/BK, AV-21D83/VT] | 46 |
| EXPLODED VIEW PARTS LIST -IV [AV-21D83/BK, AV-21D83/VT] | 47 |
| EXPLODED VIEW -IV [AV-21D83/BK, AV-21D83/VT] | 48 |
| PRINTED WIRING BOARD PARTS LIST [AV-20N83/BK] | |
| MAIN PW BOARD ASS'Y | 49 |
| DIFFERENCE PARTS LIST BETWEEN AV-20N83/BK AND AV-21D83/BK | 54 |
| PRINTED WIRING BOARD PARTS LIST [AV-20N83/VT] | |
| MAIN PW BOARD ASS'Y | 55 |
| DIFFERENCE PARTS LIST BETWEEN AV-21D83/VT AND AV-20N83/VT | 60 |
| REMOTE CONTROL UNIT PARTS LIST | 61 |
| PACKING [AV-20N83/BK, AV-20N83/VT] | 62 |
| PACKING PARTS LIST [AV-20N83/BK, AV-20N83/VT] | 62 |
| PACKING [AV-21D83/BK, AV-21D83/VT] | 63 |
| PACKING PARTS LIST [AV-21D83/BK, AV-21D83/VT] | 63 |

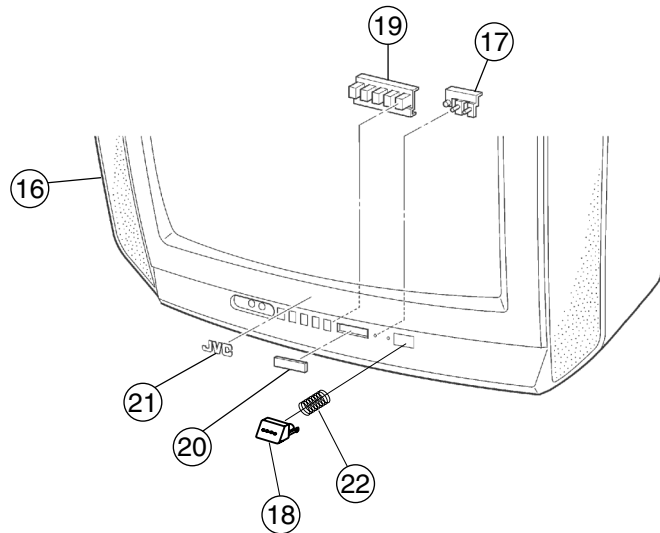
USING P.W. BOARD & REMOTE CONTROL UNIT

| P.W.B ASS'Y | Model | AV-20N83/BK | AV-21D83/BK | AV-21D83/VT | AV-20N83/VT |
|-----------------------------------|-------|--------------|--------------|--------------|--------------|
| MAIN PWB (include CRT SOCKET PWB) | | SCH-1090A-BK | SCH-1122A-BK | SCH-1315A-CK | SCH-1316A-CK |
| REMOTE CONTROL UNIT | | RM-C1017-1H | ← | RM-C1027-1H | ← |

EXPLODED VIEW PARTS LIST -I [AV-20N83/BK, AV-20N83/VT]

| △ Ref.No. | Part No. | Part Name | Description | Local |
|-----------|-----------------|--------------|---------------|-------|
| 16 | LC10438-028A-H | FRONT CABI | [AV-20N83/BK] | |
| 16 | LC10438-034A-HK | FRONT CABI | [AV-20N83/VT] | |
| 17 | LC30665-001A-H | REMOCON LENS | | |
| 18 | LC30663-003A-H | POWER KNOB | | |
| 19 | LC20318-003A-H | CONTROL KNOB | | |
| 20 | LC30664-001B-H | E.E. WINDOW | | |
| 21 | CM48006-007-C | JVC MARK | | |
| 22 | CM35235-003-H | SPRING | | |

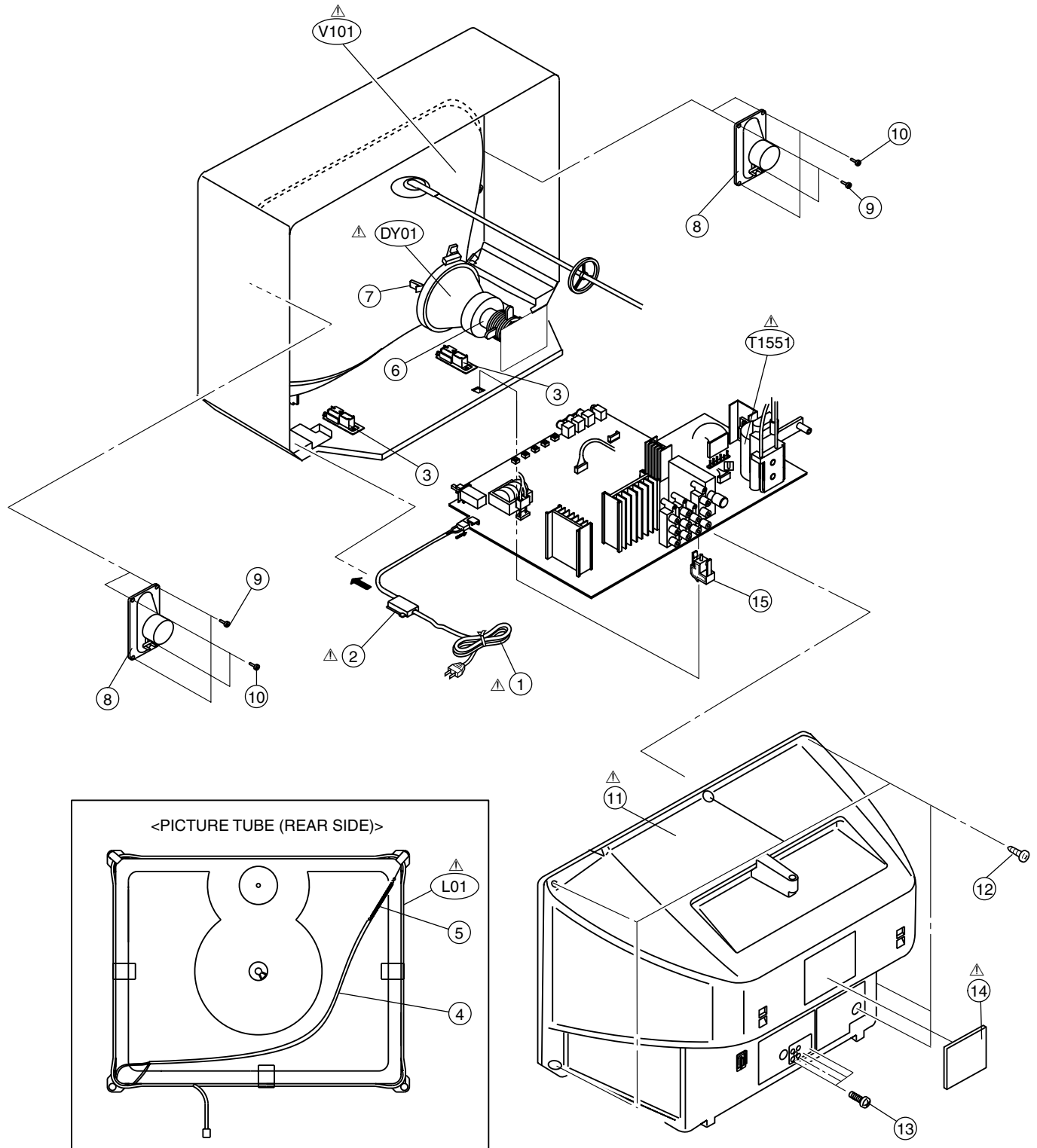
EXPLODED VIEW -I [AV-20N83/BK, AV-20N83/VT]



EXPLODED VIEW PARTS LIST -II [AV-20N83/BK, AV-20N83/VT]

| △ Ref.No. | Part No. | Part Name | Description | Local |
|-----------|-----------------|--------------------|-----------------------------|-------|
| △ V01 | A48LWX10X | PICTURE TUBE | [AV-20N83/BK] | |
| △ V01 | A48JLL91X01 | PICTURE TUBE (ITC) | Inc. DEF YOKE [AV-20N83/VT] | |
| △ L01 | QQW0156-001 | DEG COIL | | |
| △ DY01 | QQD0081-001 | DEFLECTION YOKE | [AV-20N83/BK] | |
| △ T1551 | QQH0143-001 | FBT | [AV-20N83/BK] | |
| △ T1551 | QQH0142-001 | FBT | [AV-20N83/VT] | |
| △ 1 | QMPR420-165-K2 | POWER CORD | [AV-20N83/BK] | |
| △ 1 | QMPR400-200-JC | POWER CORD | [AV-20N83/VT] | |
| △ 2 | CM47005-A01-H | CORD CLAMP | | |
| 3 | CM36623-B01-H | CHASSIS RAIL | (X2) | |
| 4 | WJY0008-002A | BRAIDED ASS'Y | | |
| 5 | A48457-3-H | SPRING | | |
| 6 | A75034-B | PC MAGNET | [AV-20N83/BK] | |
| 7 | CE40764-00A | WEDGE ASS'Y | (X3) [AV-20N83/BK] | |
| 8 | QAS0101-001 | SPEAKER | (X2) SP01, SP02 | |
| 9 | QYSBSF4012Z | TAPPING SCREW | (X4) | |
| 10 | QYSBSF4012Z | TAPPING SCREW | (X4) [AV-20N83/BK] | |
| △ 11 | LC10448-005A-H | REAR COVER | [AV-20N83/BK] | |
| △ 11 | LC10448-005A-HK | REAR COVER | [AV-20N83/VT] | |
| 12 | QYSBSFG4016Z | TAPPING SCREW | (X6) | |
| 13 | QYSBSF3010Z | TAPPING SCREW | (X4) | |
| △ 14 | GG20029-001A-H | RATING LABEL | | |
| 15 | CM48144-002-H | PB STOPPER | | |

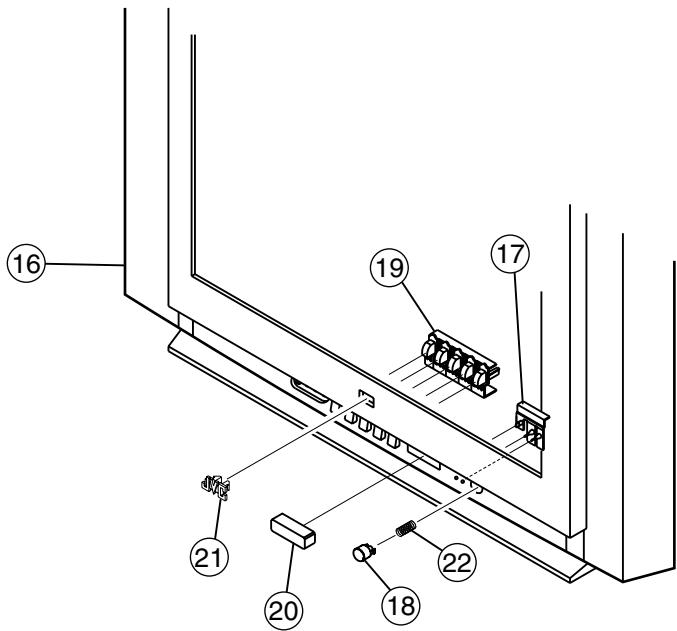
EXPLODED VIEW -II [AV-20N83/BK, AV-20N83/VT]



EXPLODED VIEW PARTS LIST -Ⅲ [AV-21D83/BK, AV-21D83/VT]

| △ Ref.No. | Part No. | Part Name | Description | Local |
|-----------|-----------------|--------------|---------------|-------|
| 16 | LC11129-024A-H | FRONT CABI | [AV-21D83/BK] | |
| 16 | LC11129-025A-HK | FRONT CABI | [AV-21D83/VT] | |
| 17 | GG30021-002A-H | LED LENS | | |
| 18 | GG30019-003A-H | POWER KNOB | | |
| 19 | GG20006-003A-H | CONTROL KNOB | | |
| 20 | GG30020-001A-H | E.E. WINDOW | | |
| 21 | GG40023-001A-H | JVC MARK | | |
| 22 | CM35235-003-H | SPRING | | |

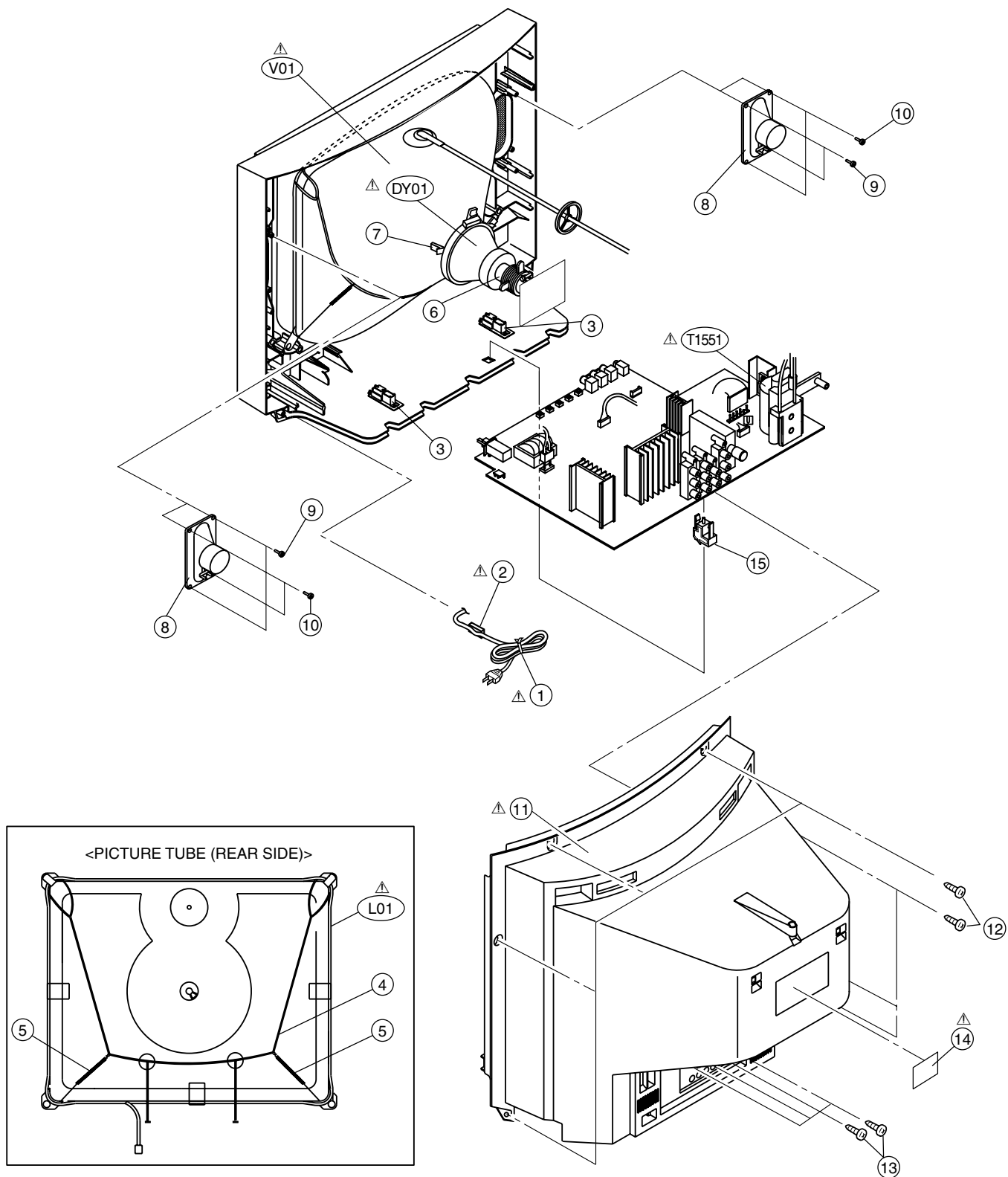
EXPLODED VIEW -Ⅲ [AV-21D83/BK, AV-21D83/VT]



EXPLODED VIEW PARTS LIST -IV [AV-21D83/BK, AV-21D83/VT]

| △ Ref.No. | Part No. | Part Name | Description | Local |
|-----------|-----------------|--------------------|-----------------------------|-------|
| △ V01 | A51LMV10X | PICTURE TUBE | [AV-21D83/BK] | |
| △ V01 | A51JSW51X07 | PICTURE TUBE (ITC) | Inc. DEF YOKE [AV-21D83/VT] | |
| △ L01 | QQW0157-001 | DEG COIL | | |
| △ DY01 | CE20336-00A | DEFLECTION YOKE | [AV-21D83/BK] | |
| △ T1551 | QQH0142-001 | FBT | | |
| △ 1 | QMPR420-165-K2 | POWER CORD | [AV-21D83/BK] | |
| △ 1 | QMPR400-200-JC | POWER CORD | [AV-21D83/VT] | |
| △ 2 | CM47005-A01-H | CORD CLAMP | | |
| 3 | CM36623-B01-H | CHASSIS RAIL | (X2) | |
| 4 | CHGB0028-0A | BRAIDED ASS'Y | | |
| 5 | A48457-3-H | SPRING | (X2) | |
| 6 | A75034-B | PC MAGNET | [AV-21D83/BK] | |
| 7 | CE42728-00A | WEDGE ASS'Y | (X3) [AV-21D83/BK] | |
| 8 | QAS0101-001 | SPEAKER | (X2) SP01, SP02 | |
| 9 | QYSBSB4012Z | TAPPING SCREW | (X4) | |
| 10 | QYSBSB4012Z | TAPPING SCREW | (X4) [AV-21D83/VT] | |
| △ 11 | GG10130-001A-H | REAR COVER | [AV-21D83/BK] | |
| △ 11 | GG10130-011A-HK | REAR COVER | [AV-21D83/VT] | |
| 12 | QYSBSFG4016Z | TAPPING SCREW | (X7) | |
| 13 | QYSBSF3010Z | TAPPING SCREW | (X4) | |
| △ 14 | GG20029-001A-H | RATING LABEL | [AV-21D83/BK] | |
| △ 14 | GG20016-025A-E | RATING LABEL | [AV-21D83/VT] | |
| 15 | CM48144-002-H | PB STOPPER | | |

EXPLODED VIEW -IV [AV-21D83/BK, AV-21D83/VT]



PRINTED WIRING BOARD PARTS LIST [AV-20N83/BK]

MAIN PW BOARD ASS'Y (SCH-1090A-BK)

| △ | Symbol No. | Part No. | Part Name | Description | Local | △ | Symbol No. | Part No. | Part Name | Description | Local |
|-----------------|------------|--------------|---------------|---------------|-------|-----------------|------------|--------------|-----------|---------------|-------|
| RESISTOR | | | | | | RESISTOR | | | | | |
| | R1001 | NRSA63J-221X | MG R | 220Ω 1/16W J | | | R1384 | NRSA63J-103X | MG R | 10kΩ 1/16W J | |
| | R1002 | NRSA63J-221X | MG R | 220Ω 1/16W J | | | R1385 | QRE141J-393Y | C R | 39kΩ 1/4W J | |
| | R1003 | NRSA63J-392X | MG R | 3.9kΩ 1/16W J | | | R1401 | NRSA63J-224X | MG R | 220kΩ 1/16W J | |
| | R1004 | NRSA63J-221X | MG R | 220Ω 1/16W J | | | R1403 | NRSA63J-0R0X | MG R | 0.0Ω 1/16W J | |
| | R1005 | QQR1214-001Y | FERRITE BEADS | | | | R1405 | NRSA63J-682X | MG R | 6.8kΩ 1/16W J | |
| | R1006 | NRSA63J-273X | MG R | 27kΩ 1/16W J | | | R1406 | NRSA63J-123X | MG R | 12kΩ 1/16W J | |
| | R1007 | NRSA63J-750X | MG R | 75Ω 1/16W J | | | R1408 | NRSA63J-682X | MG R | 6.8kΩ 1/16W J | |
| | R1101 | NRSA63J-100X | MG R | 10Ω 1/16W J | | | R1410 | NRSA63J-123X | MG R | 12kΩ 1/16W J | |
| | R1102 | NRSA63J-682X | MG R | 6.8kΩ 1/16W J | | | R1411 | QRG01GJ-221 | OM R | 220Ω 1W J | |
| | R1103 | NRSA63J-272X | MG R | 2.7kΩ 1/16W J | | | R1412 | QRE121J-1R0Y | C R | 1Ω 1/2W J | |
| | R1104 | NRSA63J-181X | MG R | 180Ω 1/16W J | | | R1413 | QRX01GJ-3R9 | MF R | 3.9Ω 1W J | |
| | R1105 | NRSA63J-220X | MG R | 22Ω 1/16W J | | | R1414 | QRE121J-680Y | C R | 68Ω 1/2W J | |
| | R1106 | NRSA63J-101X | MG R | 100Ω 1/16W J | | | R1425 | NRSA63J-683X | MG R | 68kΩ 1/16W J | |
| | R1107 | NRSA63J-472X | MG R | 4.7kΩ 1/16W J | | | R1521 | NRSA63J-101X | MG R | 100Ω 1/16W J | |
| | R1108 | NRSA63J-222X | MG R | 2.2kΩ 1/16W J | | | R1522 | NRSA63J-102X | MG R | 1kΩ 1/16W J | |
| | R1109 | NRSA63J-222X | MG R | 2.2kΩ 1/16W J | | | R1524 | QRL039J-220 | OM R | 22Ω 3W J | |
| | R1111 | NRSA63J-102X | MG R | 1kΩ 1/16W J | | | R1526 | QRG01GJ-181 | OM R | 180Ω 1W J | |
| | R1117 | NRSA63J-102X | MG R | 1kΩ 1/16W J | | | R1527 | QRL039J-103 | OM R | 10kΩ 3W J | |
| | R1130 | NRSA63J-472X | MG R | 4.7kΩ 1/16W J | | | R1528 | QRX029J-R47 | MF R | 0.47Ω 2W J | |
| | R1131 | NRSA63J-471X | MG R | 470Ω 1/16W J | | | R1529 | QRX029J-R47 | MF R | 0.47Ω 2W J | |
| | R1132 | NRSA63J-222X | MG R | 2.2kΩ 1/16W J | | | R1531 | NRSA63J-222X | MG R | 2.2kΩ 1/16W J | |
| | R1133 | NRSA63J-152X | MG R | 1.5kΩ 1/16W J | | △ | R1532 | QRZ9017-4R7 | F R | 4.7Ω 1/4W J | |
| | R1134 | NRSA63J-182X | MG R | 1.8kΩ 1/16W J | | △ | R1540 | QRZ9021-4R7 | F R | 4.7Ω 1W J | |
| | R1135 | NRSA63J-561X | MG R | 560Ω 1/16W J | | | R1541 | QRE121J-124Y | C R | 120kΩ 1/2W J | |
| | R1136 | NRSA63J-472X | MG R | 4.7kΩ 1/16W J | | | R1542 | QRE121J-334Y | C R | 330kΩ 1/2W J | |
| | R1137 | NRSA63J-103X | MG R | 10kΩ 1/16W J | | | R1545 | QRE121J-220Y | C R | 22Ω 1/2W J | |
| | R1138 | NRSA63J-471X | MG R | 470Ω 1/16W J | | | R1546 | QRE121J-822Y | C R | 8.2kΩ 1/2W J | |
| | R1139 | NRSA63J-222X | MG R | 2.2kΩ 1/16W J | | | R1591 | QRE121J-222Y | C R | 2.2kΩ 1/2W J | |
| | R1140 | NRSA63J-152X | MG R | 1.5kΩ 1/16W J | | | R1594 | QRE121J-223Y | C R | 22kΩ 1/2W J | |
| | R1141 | NRSA63J-182X | MG R | 1.8kΩ 1/16W J | | | R1595 | NRSA63J-222X | MG R | 2.2kΩ 1/16W J | |
| | R1142 | NRSA63J-561X | MG R | 560Ω 1/16W J | | | R1596 | QRT029J-1R8 | MF R | 1.8Ω 2W J | |
| | R1143 | NRSA63J-471X | MG R | 470Ω 1/16W J | | | R1597 | QRT029J-1R5 | MF R | 1.5Ω 2W J | |
| | R1144 | NRSA63J-220X | MG R | 22Ω 1/16W J | | | R1621 | NRSA63J-0R0X | MG R | 0.0Ω 1/16W J | |
| | R1145 | NRSA63J-821X | MG R | 820Ω 1/16W J | | | R1622 | NRSA63J-0R0X | MG R | 0.0Ω 1/16W J | |
| | R1146 | NRSA63J-103X | MG R | 10kΩ 1/16W J | | | R1624 | NRSA63J-101X | MG R | 100Ω 1/16W J | |
| | R1147 | NRSA63J-101X | MG R | 100Ω 1/16W J | | | R1625 | NRSA63J-101X | MG R | 100Ω 1/16W J | |
| | R1148 | NRSA63J-332X | MG R | 3.3kΩ 1/16W J | | | R1627 | NRSA63J-102X | MG R | 1kΩ 1/16W J | |
| | R1301 | NRSA63J-222X | MG R | 2.2kΩ 1/16W J | | | R1650 | NRSA63J-103X | MG R | 10kΩ 1/16W J | |
| | R1302 | NRSA63J-222X | MG R | 2.2kΩ 1/16W J | | | R1651 | NRSA63J-153X | MG R | 15kΩ 1/16W J | |
| | R1303 | NRSA63J-562X | MG R | 5.6kΩ 1/16W J | | | R1654 | NRSA63J-103X | MG R | 10kΩ 1/16W J | |
| | R1304 | NRSA63J-222X | MG R | 2.2kΩ 1/16W J | | | R1655 | NRSA63J-153X | MG R | 15kΩ 1/16W J | |
| | R1305 | NRSA63J-222X | MG R | 2.2kΩ 1/16W J | | | R1658 | QRE121J-2R2Y | C R | 2.2Ω 1/2W J | |
| | R1306 | NRSA63J-562X | MG R | 5.6kΩ 1/16W J | | | R1659 | QRE121J-2R2Y | C R | 2.2Ω 1/2W J | |
| | R1351 | NRSA63J-151X | MG R | 150Ω 1/16W J | | | R1660 | NRSA63J-103X | MG R | 10kΩ 1/16W J | |
| | R1352 | QRL029J-123 | OM R | 12kΩ 2W J | | | R1661 | NRSA63J-683X | MG R | 68kΩ 1/16W J | |
| | R1353 | NRSA63J-182X | MG R | 1.8kΩ 1/16W J | | | R1662 | NRSA63J-333X | MG R | 33kΩ 1/16W J | |
| | R1354 | NRSA63J-331X | MG R | 330Ω 1/16W J | | | R1663 | NRSA63J-103X | MG R | 10kΩ 1/16W J | |
| | R1355 | NRSA63J-101X | MG R | 100Ω 1/16W J | | | R1664 | NRSA63J-222X | MG R | 2.2kΩ 1/16W J | |
| | R1356 | QRE121J-102Y | C R | 1kΩ 1/2W J | | | R1686 | NRSA63J-102X | MG R | 1kΩ 1/16W J | |
| | R1357 | QRZ0107-152Z | C R | 1.5kΩ 1W K | | | R1687 | NRSA63J-103X | MG R | 10kΩ 1/16W J | |
| | R1358 | QRE121J-272Y | C R | 2.7kΩ 1/2W J | | | R1688 | NRSA63J-273X | MG R | 27kΩ 1/16W J | |
| | R1359 | QRE121J-561Y | C R | 560Ω 1/2W J | | | R1690 | NRSA63J-104X | MG R | 100kΩ 1/16W J | |
| | R1361 | NRSA63J-151X | MG R | 150Ω 1/16W J | | | R1698 | NRSA63J-104X | MG R | 100kΩ 1/16W J | |
| | R1362 | QRL029J-123 | OM R | 12kΩ 2W J | | | R1699 | NRSA63J-104X | MG R | 100kΩ 1/16W J | |
| | R1363 | NRSA63J-182X | MG R | 1.8kΩ 1/16W J | | | R1701 | NRSA63J-101X | MG R | 100Ω 1/16W J | |
| | R1364 | NRSA63J-331X | MG R | 330Ω 1/16W J | | | R1702 | NRSA63J-101X | MG R | 100Ω 1/16W J | |
| | R1365 | NRSA63J-101X | MG R | 100Ω 1/16W J | | | R1703 | NRSA63J-101X | MG R | 100Ω 1/16W J | |
| | R1366 | QRE121J-102Y | C R | 1kΩ 1/2W J | | | R1704 | NRSA63J-102X | MG R | 1kΩ 1/16W J | |
| | R1367 | QRZ0107-152Z | C R | 1.5kΩ 1W K | | | R1705 | NRSA63J-102X | MG R | 1kΩ 1/16W J | |
| | R1368 | NRSA63J-332X | MG R | 3.3kΩ 1/16W J | | | R1706 | NRSA63J-102X | MG R | 1kΩ 1/16W J | |
| △ | R1369 | QRZ9017-150 | F R | 15Ω 1/4W J | | | R1707 | NRSA63J-472X | MG R | 4.7kΩ 1/16W J | |
| | R1370 | NRSA63J-151X | MG R | 150Ω 1/16W J | | | R1708 | NRSA63J-472X | MG R | 4.7kΩ 1/16W J | |
| | R1371 | QRL029J-123 | OM R | 12kΩ 2W J | | | R1709 | NRSA63J-472X | MG R | 4.7kΩ 1/16W J | |
| | R1372 | NRSA63J-182X | MG R | 1.8kΩ 1/16W J | | | R1710 | NRSA63J-472X | MG R | 4.7kΩ 1/16W J | |
| | R1373 | NRSA63J-331X | MG R | 330Ω 1/16W J | | | R1711 | NRSA63J-101X | MG R | 100Ω 1/16W J | |
| | R1374 | NRSA63J-101X | MG R | 100Ω 1/16W J | | | R1712 | NRSA63J-101X | MG R | 100Ω 1/16W J | |
| | R1375 | QRE121J-102Y | C R | 1kΩ 1/2W J | | | R1713 | NRSA63J-101X | MG R | 100Ω 1/16W J | |
| | R1376 | QRZ0107-152Z | C R | 1.5kΩ 1W K | | | R1714 | NRSA63J-101X | MG R | 100Ω 1/16W J | |
| | R1377 | NRSA63J-330X | MG R | 33Ω 1/16W J | | | R1715 | NRSA63J-103X | MG R | 10kΩ 1/16W J | |
| | R1378 | NRSA63J-223X | MG R | 22kΩ 1/16W J | | | R1716 | NRSA63J-103X | MG R | 10kΩ 1/16W J | |
| | R1379 | NRSA63J-103X | MG R | 10kΩ 1/16W J | | | R1717 | NRSA63J-103X | MG R | 10kΩ 1/16W J | |
| | R1383 | QRE121J-394Y | C R | 390kΩ 1/2W J | | | R1718 | NRSA63J-221X | MG R | 220Ω 1/16W J | |

| △ Symbol No. | Part No. | Part Name | Description | Local |
|-----------------|--------------|-----------|---------------|-------|
| RESISTOR | | | | |
| R1719 | NRSA63J-221X | MG R | 220Ω 1/16W J | |
| R1720 | NRSA63J-102X | MG R | 1kΩ 1/16W J | |
| R1721 | NRSA63J-221X | MG R | 220Ω 1/16W J | |
| R1722 | NRSA63J-221X | MG R | 220Ω 1/16W J | |
| R1723 | NRSA63J-221X | MG R | 220Ω 1/16W J | |
| R1724 | NRSA63J-221X | MG R | 220Ω 1/16W J | |
| R1725 | NRSA63J-103X | MG R | 10kΩ 1/16W J | |
| R1726 | NRSA63J-472X | MG R | 4.7kΩ 1/16W J | |
| R1727 | NRSA63J-104X | MG R | 100kΩ 1/16W J | |
| R1728 | NRSA63J-103X | MG R | 10kΩ 1/16W J | |
| R1729 | NRSA63J-470X | MG R | 47Ω 1/16W J | |
| R1730 | NRSA63J-223X | MG R | 22kΩ 1/16W J | |
| R1731 | NRSA63J-101X | MG R | 100Ω 1/16W J | |
| R1732 | NRSA02F-393X | MG R | 39kΩ 1/10W F | |
| R1733 | NRSA63J-273X | MG R | 27kΩ 1/16W J | |
| R1734 | NRSA63J-391X | MG R | 390Ω 1/16W J | |
| R1735 | NRSA63J-104X | MG R | 100kΩ 1/16W J | |
| R1736 | NRSA63J-333X | MG R | 33kΩ 1/16W J | |
| R1737 | NRSA63J-272X | MG R | 2.7kΩ 1/16W J | |
| R1738 | NRSA63J-0R0X | MG R | 0.0Ω 1/16W J | |
| R1739 | NRSA63J-101X | MG R | 100Ω 1/16W J | |
| R1740 | NRSA63J-101X | MG R | 100Ω 1/16W J | |
| R1741 | NRSA63J-101X | MG R | 100Ω 1/16W J | |
| R1742 | NRSA63J-0R0X | MG R | 0.0Ω 1/16W J | |
| R1743 | NRSA63J-681X | MG R | 680Ω 1/16W J | |
| R1744 | NRSA63J-561X | MG R | 560Ω 1/16W J | |
| R1745 | NRSA63J-105X | MG R | 1MΩ 1/16W J | |
| R1746 | NRSA63J-333X | MG R | 33kΩ 1/16W J | |
| R1747 | NRSA63J-103X | MG R | 10kΩ 1/16W J | |
| R1748 | NRSA02J-475X | MG R | 4.7MΩ 1/10W J | |
| R1749 | NRSA02J-475X | MG R | 4.7MΩ 1/10W J | |
| R1750 | NRSA63J-0R0X | MG R | 0.0Ω 1/16W J | |
| R1755 | NRSA63J-101X | MG R | 100Ω 1/16W J | |
| R1756 | NRSA63J-101X | MG R | 100Ω 1/16W J | |
| R1757 | NRSA63J-222X | MG R | 2.2kΩ 1/16W J | |
| R1758 | NRSA63J-222X | MG R | 2.2kΩ 1/16W J | |
| R1760 | NRSA63J-682X | MG R | 6.8kΩ 1/16W J | |
| R1770 | QRE121J-271Y | C R | 270Ω 1/2W J | |
| R1771 | NRSA63J-102X | MG R | 1kΩ 1/16W J | |
| R1772 | QRE121J-271Y | C R | 270Ω 1/2W J | |
| R1773 | NRSA63J-102X | MG R | 1kΩ 1/16W J | |
| R1775 | NRSA63J-332X | MG R | 3.3kΩ 1/16W J | |
| R1776 | NRSA63J-392X | MG R | 3.9kΩ 1/16W J | |
| R1777 | NRSA63J-682X | MG R | 6.8kΩ 1/16W J | |
| R1779 | NRSA63J-272X | MG R | 2.7kΩ 1/16W J | |
| R1780 | NRSA63J-471X | MG R | 470Ω 1/16W J | |
| R1781 | NRSA63J-122X | MG R | 1.2kΩ 1/16W J | |
| R1782 | NRSA63J-181X | MG R | 180Ω 1/16W J | |
| R1783 | NRSA63J-221X | MG R | 220Ω 1/16W J | |
| R1784 | NRSA63J-331X | MG R | 330Ω 1/16W J | |
| R1785 | NRSA63J-471X | MG R | 470Ω 1/16W J | |
| R1786 | NRSA63J-202X | MG R | 2kΩ 1/16W J | |
| R1803 | NRSA63J-333X | MG R | 33kΩ 1/16W J | |
| R1804 | NRSA63J-750X | MG R | 75Ω 1/16W J | |
| R1805 | NRSA63J-750X | MG R | 75Ω 1/16W J | |
| R1806 | NRSA63J-750X | MG R | 75Ω 1/16W J | |
| R1807 | NRSA63J-750X | MG R | 75Ω 1/16W J | |
| R1808 | NRSA63J-823X | MG R | 82kΩ 1/16W J | |
| R1809 | NRSA63J-391X | MG R | 390Ω 1/16W J | |
| R1810 | NRSA63J-823X | MG R | 82kΩ 1/16W J | |
| R1811 | NRSA63J-391X | MG R | 390Ω 1/16W J | |
| R1812 | NRSA63J-104X | MG R | 100kΩ 1/16W J | |
| R1813 | NRSA63J-222X | MG R | 2.2kΩ 1/16W J | |
| R1815 | NRSA63J-101X | MG R | 100Ω 1/16W J | |
| R1818 | NRSA63J-222X | MG R | 2.2kΩ 1/16W J | |
| R1820 | NRSA63J-101X | MG R | 100Ω 1/16W J | |
| R1821 | NRSA63J-222X | MG R | 2.2kΩ 1/16W J | |
| R1823 | NRSA63J-101X | MG R | 100Ω 1/16W J | |
| R1824 | NRSA63J-222X | MG R | 2.2kΩ 1/16W J | |
| R1826 | NRSA63J-101X | MG R | 100Ω 1/16W J | |
| R1829 | NRSA63J-750X | MG R | 75Ω 1/16W J | |
| R1830 | NRSA63J-222X | MG R | 2.2kΩ 1/16W J | |

| △ Symbol No. | Part No. | Part Name | Description | Local |
|------------------|--------------|-----------|---------------|-------|
| RESISTOR | | | | |
| R1831 | NRSA63J-222X | MG R | 2.2kΩ 1/16W J | |
| R1832 | NRSA63J-122X | MG R | 1.2kΩ 1/16W J | |
| R1833 | NRSA63J-102X | MG R | 1kΩ 1/16W J | |
| R1834 | NRSA63J-562X | MG R | 5.6kΩ 1/16W J | |
| R1835 | NRSA63J-562X | MG R | 5.6kΩ 1/16W J | |
| R1836 | NRSA63J-750X | MG R | 75Ω 1/16W J | |
| R1837 | NRSA63J-101X | MG R | 100Ω 1/16W J | |
| R1838 | QRK126J-121X | UNF R | 120Ω 1/2W J | |
| R1839 | QRE121J-221Y | C R | 220Ω 1/2W J | |
| R1840 | QRE121J-221Y | C R | 220Ω 1/2W J | |
| R1841 | NRSA63J-0R0X | MG R | 0.0Ω 1/16W J | |
| R1842 | NRSA63J-0R0X | MG R | 0.0Ω 1/16W J | |
| R1843 | NRSA63J-821X | MG R | 820Ω 1/16W J | |
| R1844 | NRSA63J-222X | MG R | 2.2kΩ 1/16W J | |
| R1845 | NRSA63J-102X | MG R | 1kΩ 1/16W J | |
| R1846 | NRSA63J-222X | MG R | 2.2kΩ 1/16W J | |
| R1847 | NRSA63J-103X | MG R | 10kΩ 1/16W J | |
| R1848 | NRSA63J-471X | MG R | 470Ω 1/16W J | |
| R1849 | NRSA63J-221X | MG R | 220Ω 1/16W J | |
| R1880 | NRSA63J-202X | MG R | 2kΩ 1/16W J | |
| R1881 | NRSA63J-103X | MG R | 10kΩ 1/16W J | |
| R1882 | NRSA63J-471X | MG R | 470Ω 1/16W J | |
| R1883 | NRSA63J-181X | MG R | 180Ω 1/16W J | |
| R1902 | QRF154K-2R2 | UNF R | 2.2Ω 15W K | |
| R1904 | QRE121J-681Y | C R | 680Ω 1/2W J | |
| R1905 | QRM034J-R22 | MP R | 0.22Ω 3W J | |
| R1907 | NRSA63J-563X | MG R | 56kΩ 1/16W J | |
| R1908 | QRL039J-333 | OM R | 33kΩ 3W J | |
| R1909 | QRE121J-474Y | C R | 470kΩ 1/2W J | |
| R1910 | QRE121J-152Y | C R | 1.5kΩ 1/2W J | |
| R1911 | QRE121J-562Y | C R | 5.6kΩ 1/2W J | |
| R1912 | NRSA63J-122X | MG R | 1.2kΩ 1/16W J | |
| R1913 | QRE121J-120Y | C R | 12Ω 1/2W J | |
| △ R1915 | QRZ0111-474 | C R | 470kΩ 1W K | |
| R1952 | NRSA63J-332X | MG R | 3.3kΩ 1/16W J | |
| R1953 | NRSA63J-101X | MG R | 100Ω 1/16W J | |
| R1957 | QRE121J-6R8Y | C R | 6.8Ω 1/2W J | |
| R1960 | NRSA63J-391X | MG R | 390Ω 1/16W J | |
| R1961 | QRL029J-183 | OM R | 18kΩ 2W J | |
| R1962 | NRSA63J-561X | MG R | 560Ω 1/16W J | |
| R1963 | QRE121J-103Y | C R | 10kΩ 1/2W J | |
| R1964 | NRSA63J-473X | MG R | 47kΩ 1/16W J | |
| R1965 | NRSA63J-0R0X | MG R | 0.0Ω 1/16W J | |
| R1966 | NRSA63J-682X | MG R | 6.8kΩ 1/16W J | |
| R1967 | NRSA63J-473X | MG R | 47kΩ 1/16W J | |
| R1970 | NRSA63J-153X | MG R | 15kΩ 1/16W J | |
| R1971 | NRSA63J-183X | MG R | 18kΩ 1/16W J | |
| R1972 | NRSA63J-391X | MG R | 390Ω 1/16W J | |
| △ R1991 | QRZ9046-825Z | C R | 8.2MΩ 1W J | |
| CAPACITOR | | | | |
| C1001 | NCB31HK-103X | C CAP. | 0.01μF 50V K | |
| C1002 | QETN1HM-106Z | E CAP. | 10μF 50V M | |
| C1003 | QFV71HJ-104Z | MF CAP. | 0.1μF 50V J | |
| C1004 | QETN1CM-477Z | E CAP. | 470μF 16V M | |
| C1005 | NCB31HK-222X | C CAP. | 2200pF 50V K | |
| C1006 | QETN1CM-336Z | E CAP. | 33μF 16V M | |
| C1007 | NCB31HK-103X | C CAP. | 0.01μF 50V K | |
| C1101 | NCB31HK-472X | C CAP. | 4700pF 50V K | |
| C1102 | NCB31HK-472X | C CAP. | 4700pF 50V K | |
| C1103 | NCB31HK-472X | C CAP. | 4700pF 50V K | |
| C1104 | NCB31HK-472X | C CAP. | 4700pF 50V K | |
| C1105 | NCB31HK-472X | C CAP. | 4700pF 50V K | |
| C1106 | NDC21HJ-180X | C CAP. | 18pF 50V J | |
| C1107 | NCB31HK-103X | C CAP. | 0.01μF 50V K | |
| C1109 | QETN1HM-106Z | E CAP. | 10μF 50V M | |
| C1130 | NCB31HK-103X | C CAP. | 0.01μF 50V K | |

| △ Symbol No. | Part No. | Part Name | Description | Local | △ Symbol No. | Part No. | Part Name | Description | Local |
|------------------|--------------|-----------|------------------|-------|------------------|--------------|-----------|---------------|-------|
| CAPACITOR | | | | | CAPACITOR | | | | |
| C1131 | NCB31HK-103X | C CAP. | 0.01μF 50V K | | C1645 | QETN1HM-475Z | E CAP. | 4.7μF 50V M | |
| C1132 | NCB31HK-103X | C CAP. | 0.01μF 50V K | | C1650 | QEHR1HM-106Z | E CAP. | 10μF 50V M | |
| C1133 | QETN1CM-107Z | E CAP. | 100μF 16V M | | C1651 | QEHR1VM-476Z | E CAP. | 47μF 35V M | |
| C1134 | NCB31HK-103X | C CAP. | 0.01μF 50V K | | C1652 | QETN1HM-106Z | E CAP. | 10μF 50V M | |
| C1135 | QETN1AM-477Z | E CAP. | 470μF 10V M | | C1655 | QEHQ1VM-108 | E CAP. | 1000μF 35V M | |
| C1136 | NCB31HK-103X | C CAP. | 0.01μF 50V K | | C1656 | QEHQ1VM-108 | E CAP. | 1000μF 35V M | |
| C1137 | NCB31HK-103X | C CAP. | 0.01μF 50V K | | C1659 | NCF21HZ-224X | C CAP. | 0.22μF 50V Z | |
| C1138 | NCB31HK-103X | C CAP. | 0.01μF 50V K | | C1660 | NCF21HZ-224X | C CAP. | 0.22μF 50V Z | |
| C1140 | NCB31HK-103X | C CAP. | 0.01μF 50V K | | C1661 | NCF21HZ-224X | C CAP. | 0.22μF 50V Z | |
| C1141 | NCB31HK-103X | C CAP. | 0.01μF 50V K | | C1662 | QEHR1VM-227Z | E CAP. | 220μF 35V M | |
| C1142 | NCB31HK-103X | C CAP. | 0.01μF 50V K | | C1663 | NCF21HZ-224X | C CAP. | 0.22μF 50V Z | |
| C1143 | QETN1HM-106Z | E CAP. | 10μF 50V M | | C1681 | QETN1CM-227Z | E CAP. | 220μF 16V M | |
| C1144 | NCB31HK-223X | C CAP. | 0.022μF 50V K | | C1682 | QETN1CM-227Z | E CAP. | 220μF 16V M | |
| C1308 | NCB31HK-103X | C CAP. | 0.01μF 50V K | | C1683 | QETN1CM-336Z | E CAP. | 33μF 16V M | |
| C1310 | NRSA63J-0R0X | MG R | 0.0Ω 1/16W J | | C1684 | QETN1HM-106Z | E CAP. | 10μF 50V M | |
| C1350 | NDC21HJ-471X | C CAP. | 470pF 50V J | | C1685 | NRSA63J-0R0X | MG R | 0.0Ω 1/16W J | |
| C1351 | NDC31HJ-681X | C CAP. | 680pF 50V J | | C1686 | NRSA63J-0R0X | MG R | 0.0Ω 1/16W J | |
| C1352 | QETN2EM-475Z | E CAP. | 4.7μF 250V M | | C1701 | QETN1CM-227Z | E CAP. | 220μF 16V M | |
| C1353 | QETN1HM-107Z | E CAP. | 100μF 50V M | | C1702 | QETN1HM-106Z | E CAP. | 10μF 50V M | |
| C1354 | QETN1HM-105Z | E CAP. | 1μF 50V M | | C1703 | NDC31HJ-330X | C CAP. | 33pF 50V J | |
| C1360 | NDC21HJ-471X | C CAP. | 470pF 50V J | | C1704 | NDC31HJ-330X | C CAP. | 33pF 50V J | |
| C1361 | NDC31HJ-681X | C CAP. | 680pF 50V J | | C1705 | NCB31HK-102X | C CAP. | 1000pF 50V K | |
| C1370 | NDC21HJ-471X | C CAP. | 470pF 50V J | | C1706 | NCB21EK-224X | C CAP. | 0.22μF 25V K | |
| C1371 | NDC31HJ-821X | C CAP. | 820pF 50V J | | C1707 | QETN1CM-107Z | E CAP. | 100μF 16V M | |
| C1372 | NRSA63J-273X | MG R | 27kΩ 1/16W J | | C1709 | QETN1CM-107Z | E CAP. | 100μF 16V M | |
| C1374 | QCZ0364-222 | C CAP. | 2200pF 50V J | | C1710 | NCB21EK-224X | C CAP. | 0.22μF 25V K | |
| C1375 | QETN1CM-477Z | E CAP. | 470μF 16V M | | C1711 | NCB31CK-104X | C CAP. | 0.1μF 16V K | |
| C1401 | QETN1HM-105Z | E CAP. | 1μF 50V M | | C1713 | NCB31CK-104X | C CAP. | 0.1μF 16V K | |
| C1402 | QCB31HK-682Z | C CAP. | 6800pF 50V K | | C1714 | QETN1CM-476Z | E CAP. | 47μF 16V M | |
| C1403 | QEHR1VM-227Z | E CAP. | 220μF 35V M | | C1720 | QETN1CM-476Z | E CAP. | 47μF 16V M | |
| C1406 | QFLC2AJ-683Z | M CAP. | 0.068μF 100V J | | C1725 | NCB31HK-681X | C CAP. | 680pF 50V K | |
| C1407 | QCS32HJ-180Z | C CAP. | 18pF 500V J | | C1730 | NCB21EK-224X | C CAP. | 0.22μF 25V K | |
| C1408 | QFV71HJ-184Z | MF CAP. | 0.18μF 50V J | | C1731 | NCB21EK-224X | C CAP. | 0.22μF 25V K | |
| C1411 | NCF21HZ-334X | C CAP. | 0.33μF 50V Z | | C1732 | QETN1CM-107Z | E CAP. | 100μF 16V M | |
| C1412 | NCF21HZ-334X | C CAP. | 0.33μF 50V Z | | C1733 | NCB31CK-104X | C CAP. | 0.1μF 16V K | |
| C1413 | QFLC2AJ-563Z | M CAP. | 0.056μF 100V J | | C1734 | NCB31HK-222X | C CAP. | 2200pF 50V K | |
| C1422 | QEHQ1VM-108 | E CAP. | 1000μF 35V M | | C1735 | NCB31HK-222X | C CAP. | 2200pF 50V K | |
| C1521 | QETN1VM-476Z | E CAP. | 47μF 35V M | | C1736 | QETN1HM-105Z | E CAP. | 1μF 50V M | |
| C1522 | QFLC1HJ-332Z | M CAP. | 3300pF 50V J | | C1737 | QETN1HM-105Z | E CAP. | 1μF 50V M | |
| C1523 | QFLC1HJ-223Z | M CAP. | 0.022μF 50V J | | C1738 | NCB31CK-104X | C CAP. | 0.1μF 16V K | |
| C1524 | QFZ0200-103 | MPP CAP. | 0.01μF 1.5kVH±3% | | C1739 | NFV41CJ-104X | MPP CAP. | 0.1μF 16V J | |
| C1527 | QFZ0199-474 | MPP CAP. | 0.47μF AC250V J | | C1740 | QETN1HM-225Z | E CAP. | 2.2μF 50V M | |
| C1529 | QEHR2EM-475Z | E CAP. | 4.7μF 250V M | | C1741 | NCB31CK-104X | C CAP. | 0.1μF 16V K | |
| C1531 | QEHR1EM-108Z | E CAP. | 1000μF 25V M | | C1742 | NCB31CK-104X | C CAP. | 0.1μF 16V K | |
| C1533 | QEHR1EM-108Z | E CAP. | 1000μF 25V M | | C1743 | QETN1CM-107Z | E CAP. | 100μF 16V M | |
| C1535 | QCB32HK-101Z | C CAP. | 100pF 500V K | | C1744 | NCB31HK-102X | C CAP. | 1000pF 50V K | |
| C1536 | QFLC1HJ-103Z | M CAP. | 0.01μF 50V J | | C1745 | NCB31EK-473X | C CAP. | 0.047μF 25V K | |
| C1540 | QFV71HJ-104Z | MF CAP. | 0.1μF 50V J | | C1746 | NCB31EK-473X | C CAP. | 0.047μF 25V K | |
| C1541 | QETN2EM-226Z | E CAP. | 22μF 250V M | | C1747 | NCB31EK-473X | C CAP. | 0.047μF 25V K | |
| C1542 | QETN2EM-226Z | E CAP. | 22μF 250V M | | C1748 | QETN1CM-476Z | E CAP. | 47μF 16V M | |
| C1550 | NCB31CK-104X | C CAP. | 0.1μF 16V K | | C1749 | QETN1HM-106Z | E CAP. | 10μF 50V M | |
| C1591 | QETN1AM-107Z | E CAP. | 100μF 10V M | | C1751 | NCB31CK-104X | C CAP. | 0.1μF 16V K | |
| C1592 | QEZ0203-107 | E CAP. | 100μF 160V M | | C1752 | NCB31CK-104X | C CAP. | 0.1μF 16V K | |
| C1593 | QETN1EM-476Z | E CAP. | 47μF 25V M | | C1753 | NCB31CK-104X | C CAP. | 0.1μF 16V K | |
| C1625 | QETN1HM-475Z | E CAP. | 4.7μF 50V M | | C1760 | NCB31HK-104X | C CAP. | 0.1μF 50V K | |
| C1626 | QETN1HM-475Z | E CAP. | 4.7μF 50V M | | C1761 | QETN1CM-107Z | E CAP. | 100μF 16V M | |
| C1628 | NCB31HK-472X | C CAP. | 4700pF 50V K | | C1770 | QETN1HM-106Z | E CAP. | 10μF 50V M | |
| C1629 | NCB31EK-104X | C CAP. | 0.1μF 25V K | | C1801 | QETN1HM-106Z | E CAP. | 10μF 50V M | |
| C1630 | QETN1HM-475Z | E CAP. | 4.7μF 50V M | | C1802 | QETN1HM-106Z | E CAP. | 10μF 50V M | |
| C1631 | NCB31EK-104X | C CAP. | 0.1μF 25V K | | C1803 | QETN1HM-106Z | E CAP. | 10μF 50V M | |
| C1632 | QETN1HM-475Z | E CAP. | 4.7μF 50V M | | C1804 | QETN1HM-106Z | E CAP. | 10μF 50V M | |
| C1633 | QETN1HM-475Z | E CAP. | 4.7μF 50V M | | C1805 | NCB31HK-104X | C CAP. | 0.1μF 50V K | |
| C1634 | QETN1HM-475Z | E CAP. | 4.7μF 50V M | | C1807 | NCF31AZ-105X | C CAP. | 1μF 10V Z | |
| C1635 | QETN1HM-107Z | E CAP. | 100μF 50V M | | C1808 | NCF31AZ-105X | C CAP. | 1μF 10V Z | |
| C1636 | QETN1HM-475Z | E CAP. | 4.7μF 50V M | | C1810 | NCF31AZ-105X | C CAP. | 1μF 10V Z | |
| C1637 | QETN1HM-475Z | E CAP. | 4.7μF 50V M | | C1811 | NCB31HK-104X | C CAP. | 0.1μF 50V K | |
| C1638 | NCB31EK-104X | C CAP. | 0.1μF 25V K | | C1812 | NCF31AZ-105X | C CAP. | 1μF 10V Z | |
| C1639 | NCF21CZ-105X | C CAP. | 1μF 16V Z | | C1813 | NCB31HK-103X | C CAP. | 0.01μF 50V K | |
| C1640 | QETN1HM-475Z | E CAP. | 4.7μF 50V M | | C1814 | NCB31HK-104X | C CAP. | 0.1μF 50V K | |
| C1641 | NCB31EK-104X | C CAP. | 0.1μF 25V K | | C1815 | NCF31AZ-105X | C CAP. | 1μF 10V Z | |
| C1642 | NCB31HK-472X | C CAP. | 4700pF 50V K | | C1817 | NCF31AZ-105X | C CAP. | 1μF 10V Z | |
| C1644 | QETN1HM-475Z | E CAP. | 4.7μF 50V M | | C1819 | NCB31HK-104X | C CAP. | 0.1μF 50V K | |

| △ | Symbol No. | Part No. | Part Name | Description | Local |
|---|------------|----------|-----------|-------------|-------|
|---|------------|----------|-----------|-------------|-------|

CAPACITOR

| | | | | | |
|---------|--------------|----------|--------|--------|---|
| C1820 | NCF31AZ-105X | C CAP. | 1μF | 10V | Z |
| C1821 | NCF31AZ-105X | C CAP. | 1μF | 10V | Z |
| C1822 | QETN1CM-477Z | E CAP. | 470μF | 16V | M |
| C1823 | QETN1CM-107Z | E CAP. | 100μF | 16V | M |
| C1824 | QETN1CM-107Z | E CAP. | 100μF | 16V | M |
| C1825 | NCB31HK-103X | C CAP. | 0.01μF | 50V | K |
| C1826 | NCB31HK-104X | C CAP. | 0.1μF | 50V | K |
| C1827 | NCB31HK-103X | C CAP. | 0.01μF | 50V | K |
| | | | | | |
| C1829 | NCB31HK-103X | C CAP. | 0.01μF | 50V | K |
| C1830 | NCB31HK-103X | C CAP. | 0.01μF | 50V | K |
| C1831 | NCB31HK-103X | C CAP. | 0.01μF | 50V | K |
| C1833 | QETN1HM-226Z | E CAP. | 22μF | 50V | M |
| C1834 | NDC31HJ-181X | C CAP. | 180pF | 50V | J |
| △ C1901 | QFZ9072-224 | MM CAP. | 0.22μF | | |
| △ C1902 | QFZ9072-104 | MM CAP. | 0.1μF | | |
| C1903 | QCZ9015-102Z | C CAP. | 1000pF | AC250V | Z |
| | | | | | |
| C1904 | QCZ9015-102Z | C CAP. | 1000pF | AC250V | Z |
| C1905 | QCZ9015-102Z | C CAP. | 1000pF | AC250V | Z |
| △ C1906 | QFZ9072-224 | MM CAP. | 0.22μF | | |
| C1907 | QEZ0552-227 | E CAP. | 220μF | | |
| C1908 | QFZ0209-222 | MPP CAP. | 2200pF | | |
| C1910 | NDC31HJ-471X | C CAP. | 470pF | 50V | J |
| C1911 | QEHR1EM-227Z | E CAP. | 220μF | 25V | M |
| C1914 | QETN1EM-227Z | E CAP. | 220μF | 25V | M |
| | | | | | |
| C1915 | QFLC1HJ-222Z | M CAP. | 2200pF | 50V | J |
| C1952 | QCB32HK-471Z | C CAP. | 470pF | 500V | K |
| C1953 | QEHQ1VM-108 | E CAP. | 1000μF | 35V | M |
| C1954 | NCB31HK-102X | C CAP. | 1000pF | 50V | K |
| C1957 | QCB32HK-471Z | C CAP. | 470pF | 500V | K |
| C1958 | QEHQ1EM-228 | E CAP. | 2200μF | 25V | M |
| C1959 | QCZ0364-561 | C CAP. | 560pF | | |
| C1960 | QEZ0203-107 | E CAP. | 100μF | 160V | M |
| | | | | | |
| C1961 | QETN1HM-225Z | E CAP. | 2.2μF | 50V | M |
| C1962 | QETN1HM-106Z | E CAP. | 10μF | 50V | M |
| C1964 | QETN1CM-476Z | E CAP. | 47μF | 16V | M |
| C1965 | QETN1HM-225Z | E CAP. | 2.2μF | 50V | M |
| C1968 | NCB31CK-104X | C CAP. | 0.1μF | 16V | K |
| C1972 | QEHR1VM-476Z | E CAP. | 47μF | 35V | M |
| C1973 | QEHR1CM-107Z | E CAP. | 100μF | 16V | M |
| C1974 | NCB31CK-104X | C CAP. | 0.1μF | 16V | K |
| | | | | | |
| C1975 | QEHR1CM-227Z | E CAP. | 220μF | 16V | M |
| C1976 | QEHR1CM-107Z | E CAP. | 100μF | 16V | M |
| C1977 | QEHR1AM-477Z | E CAP. | 470μF | 10V | M |
| C1978 | NCB31HK-104X | C CAP. | 0.1μF | 50V | K |
| C1980 | QETN1CM-107Z | E CAP. | 100μF | 16V | M |
| △ C1991 | QCZ9079-102 | C CAP. | 1000pF | AC250V | M |
| △ C1992 | QCZ9079-102 | C CAP. | 1000pF | AC250V | M |
| △ C1993 | QCZ9079-152 | C CAP. | 1500pF | AC250V | M |

TRANSFORMER

| | | |
|---------|---------------|--------------|
| T1521 | CE40203-00CJ1 | DRIVE TRANSF |
| △ T1551 | QQH0143-001 | FB TRANSF |
| △ T1901 | QQS0182-001 | SW TRANSF |

COIL

| | | | | |
|-------|--------------|------------|--------|---|
| L1001 | CE42050-001Z | BEADS CORE | | |
| L1002 | CE42050-001Z | BEADS CORE | | |
| L1101 | QQLZ014-R82 | COIL | 0.82μH | |
| L1524 | QQLZ034-320 | COIL | 32μH | |
| L1701 | QQL244K-100Z | COIL | 10μH | K |
| L1702 | QQL244K-100Z | COIL | 10μH | K |
| L1731 | QQL244J-5R6Z | COIL | 5.6μH | J |
| L1732 | QQL244J-5R6Z | COIL | 5.6μH | J |
| | | | | |
| L1951 | QQLZ034-460 | COIL | 46μH | |
| L1953 | QQL244J-5R6Z | COIL | 5.6μH | J |
| L1954 | QQL244J-5R6Z | COIL | 5.6μH | J |

| △ | Symbol No. | Part No. | Part Name | Description | Local |
|---|------------|----------|-----------|-------------|-------|
|---|------------|----------|-----------|-------------|-------|

DIODE

| | | |
|-------|----------------|-----------------|
| D1101 | 1SS268-X | SI. DIODE |
| D1350 | 1SS244-T2 | SI. DIODE |
| D1352 | RGP10J-5025-T3 | SI. DIODE |
| D1353 | MA1111-X | SI. DIODE |
| D1354 | MA1111-X | SI. DIODE |
| D1355 | MA1111-X | SI. DIODE |
| D1356 | MA1111-X | SI. DIODE |
| D1357 | MA1111-X | SI. DIODE |
| | | |
| D1358 | MA1111-X | SI. DIODE |
| D1360 | 1SS244-T2 | SI. DIODE |
| D1370 | 1SS244-T2 | SI. DIODE |
| D1372 | MA3075/M/-X | ZENER DIODE |
| D1373 | MA1111-X | SI. DIODE |
| D1374 | MA1111-X | SI. DIODE |
| D1401 | RGP10J-5025-T3 | SI. DIODE |
| D1402 | MTZJ75-T2 | ZENER DIODE |
| | | |
| D1405 | 1N4003-T2 | SI. DIODE |
| D1408 | MA1111-X | SI. DIODE |
| D1523 | RGP10J-5025-T3 | SI. DIODE |
| D1541 | RGP10J-5025-T3 | SI. DIODE |
| D1550 | MA1111-X | SI. DIODE |
| D1551 | RGP10J-5025-T3 | SI. DIODE |
| D1553 | RGP10J-5025-T3 | SI. DIODE |
| D1554 | RGP10J-5025-T3 | SI. DIODE |
| | | |
| D1592 | MA3075/H/-X | ZENER DIODE |
| D1652 | MA3330/L/-X | ZENER DIODE |
| D1653 | MA3330/L/-X | ZENER DIODE |
| D1655 | MA1111-X | SI. DIODE |
| D1682 | MA1111-X | SI. DIODE |
| D1702 | MA3024-X | ZENER DIODE |
| D1703 | MA3051/M/-X | ZENER DIODE |
| D1704 | MA3033-X | ZENER DIODE |
| | | |
| D1730 | MA1111-X | SI. DIODE |
| D1731 | MA1111-X | SI. DIODE |
| D1732 | MA1111-X | SI. DIODE |
| D1733 | MA1111-X | SI. DIODE |
| D1760 | SLR-342VR-T16 | LED |
| D1761 | SLR-342MC-T16 | LED |
| D1770 | MA1111-X | SI. DIODE |
| D1771 | P1241-04 | PHOTO CONDUCTOR |
| | | |
| D1801 | MA3120/M/-X | ZENER DIODE |
| D1802 | MA3120/M/-X | ZENER DIODE |
| D1807 | MA3100/M/-X | ZENER DIODE |
| D1808 | MA3100/M/-X | ZENER DIODE |
| D1901 | GSIB460 | BRIDGE DIODE |
| D1903 | MTZJ12C-T2 | ZENER DIODE |
| D1904 | EG01C-T2 | SI. DIODE |
| D1906 | EG01C-T2 | SI. DIODE |
| | | |
| D1907 | MA3150/M/-X | ZENER DIODE |
| D1908 | MTZJ27B-T2 | ZENER DIODE |
| D1909 | MA1111-X | SI. DIODE |
| D1910 | NRSA63J-0R0X | MG R |
| D1911 | RGP10J-TS-T3 | SI. DIODE |
| D1912 | 1SS133-T2 | SI. DIODE |
| D1914 | ERC30-02L38 | SI. DIODE |
| D1952 | ERC30-02L38 | SI. DIODE |

0.0Ω 1/16W J

| | | |
|-------|-------------|-------------|
| D1954 | RGP30B-F1 | SI. DIODE |
| D1956 | RU3AM-LFC4 | SI. DIODE |
| D1964 | MA3330/L/-X | ZENER DIODE |
| D1965 | 1SS133-T2 | SI. DIODE |
| D1966 | MA3068/M/-X | ZENER DIODE |
| D1968 | MA1111-X | SI. DIODE |
| D1969 | MA1111-X | SI. DIODE |
| D1971 | MA1111-X | SI. DIODE |

| △ Symbol No. | Part No. | Part Name | Description | Local | △ Symbol No. | Part No. | Part Name | Description | Local |
|-------------------|-----------------|------------------|-------------|-------|---------------|----------------|------------------|-------------|---------|
| TRANSISTOR | | | | | OTHERS | | | | |
| Q1101 | 2SC5083/L-P/-T | TRANSISTOR | | | | LC30114-001C-H | LED HOLDER | | |
| Q1102 | UN2212-X | DIGI. TRANSISTOR | | | | CM35921-B02 | CDS HOLDER | | |
| Q1104 | 2SB709A/QR/-X | TRANSISTOR | | | CF1130 | QAX0694-001Z | C FILTER | | |
| Q1108 | 2SD601A/QR/-X | TRANSISTOR | | | CF1131 | QAX0694-001Z | C FILTER | | |
| Q1130 | 2SB709A/QR/-X | TRANSISTOR | | | CF1140 | QAX0695-001Z | C FILTER | | |
| Q1131 | UN2212-X | DIGI. TRANSISTOR | | | CL1001 | QZW0027-002 | WIRE CLAMP | | |
| Q1132 | 2SD601A/QR/-X | TRANSISTOR | | | CL1002 | QZW0027-001 | WIRE CLAMP | | |
| Q1133 | 2SB709A/QR/-X | TRANSISTOR | | | CL1003 | QZW0027-004 | WIRE CLAMP | | |
| Q1134 | UN2212-X | DIGI. TRANSISTOR | | | △ CP1951 | ICP-N75-Y | IC PROTECTOR | | |
| Q1135 | UN2212-X | DIGI. TRANSISTOR | | | △ CP1953 | ICP-N75-Y | IC PROTECTOR | | |
| Q1136 | 2SD601A/QR/-X | TRANSISTOR | | | △ F1901 | QMF51E2-4R0J4 | FUSE | | |
| Q1137 | 2SD601A/QR/-X | TRANSISTOR | | | FC1901 | CEMG002-001Z | FUSE CLIP | | |
| Q1301 | 2SB709A/QR/-X | TRANSISTOR | | | J1770 | QNS0155-001 | 3.5 JACK | | |
| Q1302 | 2SB709A/QR/-X | TRANSISTOR | | | J1771 | QNN0282-003 | PIN JACK | | |
| Q1350 | STC344-T | TRANSISTOR | | | J1772 | QNN0282-002 | PIN JACK | | |
| Q1351 | 2SA1321-T | TRANSISTOR | | | J1773 | QNN0282-001 | PIN JACK | | |
| Q1352 | 2SB709A/QR/-X | TRANSISTOR | | | J1801 | QNN0349-001 | PIN JACK | | |
| Q1360 | STC344-T | TRANSISTOR | | | J1802 | QNN0349-002 | PIN JACK | | |
| Q1361 | 2SA1321-T | TRANSISTOR | | | J1803 | QNN0348-001 | PIN JACK | | |
| Q1370 | STC344-T | TRANSISTOR | | | J1804 | QNN0349-001 | PIN JACK | | |
| Q1371 | 2SA1321-T | TRANSISTOR | | | K1104 | QQR1113-001Z | FERRITE BEADS | | |
| Q1374 | 2SD601A/QR/-X | TRANSISTOR | | | K1105 | QQR1113-001Z | FERRITE BEADS | | |
| Q1375 | 2SD601A/QR/-X | TRANSISTOR | | | K1106 | QQR1113-001Z | FERRITE BEADS | | |
| Q1376 | 2SD601A/QR/-X | TRANSISTOR | | | K1701 | QQR1113-001Z | FERRITE BEADS | | |
| Q1521 | 2SC2655/Y/-T | TRANSISTOR | | | K1902 | QQR1114-001Z | FERRITE BEADS | | |
| Q1522 | 2SD2634-YD | POWER TRANSISTOR | | | K1903 | QQR1114-001Z | FERRITE BEADS | | |
| Q1591 | 2SA1208/ST/Z1-T | TRANSISTOR | | | K1951 | QQR1113-001Z | FERRITE BEADS | | |
| Q1592 | UN2212-X | DIGI. TRANSISTOR | | | K1954 | QQR1113-001Z | FERRITE BEADS | | |
| Q1660 | 2SD601A/QR/-X | TRANSISTOR | | | K1955 | QQR1214-001Y | FERRITE BEADS | | |
| Q1661 | 2SD601A/QR/-X | TRANSISTOR | | | △ LF1902 | QQR1035-001 | LINE FILTER | | |
| Q1683 | 2SB709A/QR/-X | TRANSISTOR | | | △ PC1901 | PC123F2 | IC(PHOTO COUPLE) | | |
| Q1684 | 2SB709A/QR/-X | TRANSISTOR | | | △ RY1901 | QSK0092-001 | RELAY | | |
| Q1685 | DTC323TK-X | DIGI. TRANSISTOR | | | S1780 | QSW0619-003Z | TACT SWITCH | MENU | |
| Q1686 | DTC323TK-X | DIGI. TRANSISTOR | | | S1781 | QSW0619-003Z | TACT SWITCH | CH- | |
| Q1701 | 2SB709A/QR/-X | TRANSISTOR | | | S1782 | QSW0619-003Z | TACT SWITCH | CH+ | |
| Q1702 | 2SB709A/QR/-X | TRANSISTOR | | | S1783 | QSW0619-003Z | TACT SWITCH | VOL- | |
| Q1703 | FMC2A-X | D.TRANSISTOR | | | S1784 | QSW0619-003Z | TACT SWITCH | VOL+ | |
| Q1720 | 2SB709A/QR/-X | TRANSISTOR | | | △ S1901 | QSW0846-001 | PUSH SWITCH | POWER | |
| Q1770 | 2SB709A/QR/-X | TRANSISTOR | | | SF1101 | QAX0325-001 | SAW FILTER | | |
| Q1801 | DTC323TK-X | DIGI. TRANSISTOR | | | SF1102 | QAX0731-001 | SAW FILTER | | |
| Q1802 | DTC323TK-X | DIGI. TRANSISTOR | | | △ SK1351 | QNZ0537-001 | CRT SOCKET | | |
| Q1803 | 2SB709A/QR/-X | TRANSISTOR | | | TH1901 | QAD0134-4R5 | P THERMISTOR | | |
| Q1804 | 2SC1740S/QR/-T | TRANSISTOR | | | TU1001 | QAU0186-002 | TUNER | | |
| Q1860 | 2SD601A/QR/-X | TRANSISTOR | | | △ VA1901 | QAF0052-621 | VARISTOR | | |
| Q1861 | 2SB709A/QR/-X | TRANSISTOR | | | W1010 | NRSA63J-0R0X | MG R | 0.0Ω | 1/16W J |
| Q1862 | 2SB709A/QR/-X | TRANSISTOR | | | W1052 | NRSA63J-0R0X | MG R | 0.0Ω | 1/16W J |
| Q1952 | 2SD601A/QR/-X | TRANSISTOR | | | W1071 | NRSA63J-0R0X | MG R | 0.0Ω | 1/16W J |
| Q1953 | 2SD601A/QR/-X | TRANSISTOR | | | W1096 | NRSA63J-0R0X | MG R | 0.0Ω | 1/16W J |
| Q1954 | 2SD601A/QR/-X | TRANSISTOR | | | W1239 | NRSA63J-0R0X | MG R | 0.0Ω | 1/16W J |
| IC | | | | | W1257 | NRSA63J-0R0X | MG R | 0.0Ω | 1/16W J |
| IC1130 | M52342SP | I.C(MONO-ANA) | | | W1307 | NRSA63J-0R0X | MG R | 0.0Ω | 1/16W J |
| IC1401 | AN5522 | I.C(MONO-ANA) | | | W1309 | NRSA63J-0R0X | MG R | 0.0Ω | 1/16W J |
| IC1602 | NJW1138M-X | I.C(MONO-ANA) | | | W1317 | NRSA63J-0R0X | MG R | 0.0Ω | 1/16W J |
| IC1650 | AN5276 | I.C(MONO-ANA) | | | W1322 | NRSA63J-0R0X | MG R | 0.0Ω | 1/16W J |
| IC1701 | TDA9386N22S0902 | I.C(MCU) | | | W1325 | NRSA63J-0R0X | MG R | 0.0Ω | 1/16W J |
| IC1702 | AT24C08-21WS3 | I.C(MEMORY-OTH) | (SERVICE) | | W1326 | NRSA63J-0R0X | MG R | 0.0Ω | 1/16W J |
| IC1760 | GP1UM281QK | IR DETECT UNIT | | | W1330 | NRSA63J-0R0X | MG R | 0.0Ω | 1/16W J |
| IC1801 | MM1492AF | I.C(MONO-ANA) | | | W1333 | NRSA63J-0R0X | MG R | 0.0Ω | 1/16W J |
| IC1901 | STR-F6707A/F7 | I.C(HYBRID) | | | W1375 | NRSA63J-0R0X | MG R | 0.0Ω | 1/16W J |
| IC1951 | SE115N-LF12 | I.C(HYBRID) | | | W1379 | NRSA63J-0R0X | MG R | 0.0Ω | 1/16W J |
| IC1972 | R1141Q331B-X | REGULATE | | | W1388 | NRSA63J-0R0X | MG R | 0.0Ω | 1/16W J |
| IC1974 | AN80T36 | REG I.C | | | W1417 | NRSA63J-0R0X | MG R | 0.0Ω | 1/16W J |
| | | | | | W1418 | NRSA63J-0R0X | MG R | 0.0Ω | 1/16W J |
| | | | | | W1430 | NRSA63J-0R0X | MG R | 0.0Ω | 1/16W J |
| | | | | | X1701 | QAX0737-001 | CRYSTAL | | |
| | | | | | Y1001 | NRSA63J-0R0X | MG R | 0.0Ω | 1/16W J |
| | | | | | Y1003 | NRSA63J-0R0X | MG R | 0.0Ω | 1/16W J |
| | | | | | Y1005 | NRSA63J-0R0X | MG R | 0.0Ω | 1/16W J |
| | | | | | Y1301 | NRSA63J-0R0X | MG R | 0.0Ω | 1/16W J |
| | | | | | Y1601 | NRSA63J-0R0X | MG R | 0.0Ω | 1/16W J |
| | | | | | Y1604 | NRSA63J-0R0X | MG R | 0.0Ω | 1/16W J |

DIFFERENCE PARTS LIST BETWEEN AV-20N83/BK AND AV-21D83/BK

In the DIFFERENCE PARTS LIST BETWEEN AV-20N83/BK and AV-21D83/BK, only difference points between these models are written. For other parts not mentioned in the list, please refer to the PARTS LIST (P49 – P53) for the AV-20N83/BK.

DIFFERENCE PARTS LIST

| △ | Symbol No. | Part No. | | Part Name |
|---|------------|-------------------------------|-------------------------------|-----------------|
| | | AV-20N83/BK | AV-21D83/BK | |
| | | SCH-1090A-BK | SCH-1122A-BK | MAIN PWB |
| | R1413 | QRX01GJ-3R9 (3.9Ω, 1W, J) | QRX01GJ-2R7 (2.7Ω, 1W, J) | MF R |
| | R1414 | QRE121J-680Y (68Ω, 1/2W, J) | — | CR |
| | R1542 | QRE121J-334Y (330kΩ, 1/2W, J) | QRE121J-274Y (270kΩ, 1/2W, J) | CR |
| △ | T1551 | QQH0143-001 | QQH0142-001 | FBT |

PRINTED WIRING BOARD PARTS LIST [AV-20N83/VT]

MAIN PW BOARD ASS'Y (SCH-1316A-CK)

| △ | Symbol No. | Part No. | Part Name | Description | Local | △ | Symbol No. | Part No. | Part Name | Description | Local |
|-----------------|------------|--------------|---------------|---------------|-------|-----------------|------------|--------------|-----------|---------------|-------|
| RESISTOR | | | | | | RESISTOR | | | | | |
| | R1001 | NRSA63J-221X | MG R | 220Ω 1/16W J | | | R1373 | NRSA63J-331X | MG R | 330Ω 1/16W J | |
| | R1002 | NRSA63J-221X | MG R | 220Ω 1/16W J | | | R1374 | NRSA63J-101X | MG R | 100Ω 1/16W J | |
| | R1003 | NRSA63J-392X | MG R | 3.9kΩ 1/16W J | | | R1375 | QRE121J-102Y | C R | 1kΩ 1/2W J | |
| | R1004 | NRSA63J-221X | MG R | 220Ω 1/16W J | | | R1376 | QRZ0107-152Z | C R | 1.5kΩ 1W K | |
| | R1005 | QQR1214-001Y | FERRITE BEADS | | | | R1377 | NRSA63J-330X | MG R | 33Ω 1/16W J | |
| | R1006 | NRSA63J-273X | MG R | 27kΩ 1/16W J | | | R1378 | NRSA63J-223X | MG R | 22kΩ 1/16W J | |
| | R1007 | NRSA63J-750X | MG R | 75Ω 1/16W J | | | R1379 | NRSA63J-103X | MG R | 10kΩ 1/16W J | |
| | R1101 | NRSA63J-100X | MG R | 10Ω 1/16W J | | | R1383 | QRE121J-394Y | C R | 390kΩ 1/2W J | |
| | R1102 | NRSA63J-682X | MG R | 6.8kΩ 1/16W J | | | R1384 | NRSA63J-103X | MG R | 10kΩ 1/16W J | |
| | R1103 | NRSA63J-272X | MG R | 2.7kΩ 1/16W J | | | R1385 | QRE141J-393Y | C R | 39kΩ 1/4W J | |
| | R1104 | NRSA63J-181X | MG R | 180Ω 1/16W J | | | R1401 | NRSA63J-224X | MG R | 220kΩ 1/16W J | |
| | R1105 | NRSA63J-220X | MG R | 22Ω 1/16W J | | | R1403 | NRSA63J-0R0X | MG R | 0.0Ω 1/16W J | |
| | R1106 | NRSA63J-101X | MG R | 100Ω 1/16W J | | | R1405 | NRSA63J-682X | MG R | 6.8kΩ 1/16W J | |
| | R1107 | NRSA63J-472X | MG R | 4.7kΩ 1/16W J | | | R1406 | NRSA63J-123X | MG R | 12kΩ 1/16W J | |
| | R1108 | NRSA63J-222X | MG R | 2.2kΩ 1/16W J | | | R1408 | NRSA63J-682X | MG R | 6.8kΩ 1/16W J | |
| | R1109 | NRSA63J-222X | MG R | 2.2kΩ 1/16W J | | | R1410 | NRSA63J-123X | MG R | 12kΩ 1/16W J | |
| | R1111 | NRSA63J-102X | MG R | 1kΩ 1/16W J | | | R1411 | QRG01GJ-221 | OM R | 220Ω 1W J | |
| | R1112 | NRSA63J-103X | MG R | 10kΩ 1/16W J | | | R1412 | QRE121J-1R0Y | C R | 1Ω 1/2W J | |
| | R1117 | NRSA63J-102X | MG R | 1kΩ 1/16W J | | | R1413 | QRX01GJ-3R9 | MF R | 3.9Ω 1W J | |
| | R1119 | NRSA63J-102X | MG R | 1kΩ 1/16W J | | | R1414 | QRE121J-390Y | C R | 39Ω 1/2W J | |
| | R1120 | NRSA63J-471X | MG R | 470Ω 1/16W J | | | R1425 | NRSA63J-683X | MG R | 68kΩ 1/16W J | |
| | R1130 | NRSA63J-472X | MG R | 4.7kΩ 1/16W J | | | R1521 | NRSA63J-101X | MG R | 100Ω 1/16W J | |
| | R1131 | NRSA63J-471X | MG R | 470Ω 1/16W J | | | R1522 | NRSA63J-102X | MG R | 1kΩ 1/16W J | |
| | R1132 | NRSA63J-222X | MG R | 2.2kΩ 1/16W J | | | R1524 | QRL039J-220 | OM R | 22Ω 3W J | |
| | R1133 | NRSA63J-152X | MG R | 1.5kΩ 1/16W J | | | R1526 | QRG01GJ-181 | OM R | 180Ω 1W J | |
| | R1134 | NRSA63J-182X | MG R | 1.8kΩ 1/16W J | | | R1527 | QRL039J-103 | OM R | 10kΩ 3W J | |
| | R1135 | NRSA63J-561X | MG R | 560Ω 1/16W J | | | R1528 | QRX029J-R47 | MF R | 0.47Ω 2W J | |
| | R1136 | NRSA63J-472X | MG R | 4.7kΩ 1/16W J | | | R1529 | QRX029J-R47 | MF R | 0.47Ω 2W J | |
| | R1137 | NRSA63J-103X | MG R | 10kΩ 1/16W J | | | R1531 | NRSA63J-222X | MG R | 2.2kΩ 1/16W J | |
| | R1138 | NRSA63J-471X | MG R | 470Ω 1/16W J | | △ | R1532 | QRZ9017-4R7 | F R | 4.7Ω 1/4W J | |
| | R1139 | NRSA63J-222X | MG R | 2.2kΩ 1/16W J | | △ | R1540 | QRZ9021-4R7 | F R | 4.7Ω 1W J | |
| | R1140 | NRSA63J-152X | MG R | 1.5kΩ 1/16W J | | | R1541 | QRE121J-154Y | C R | 150kΩ 1/2W J | |
| | R1141 | NRSA63J-182X | MG R | 1.8kΩ 1/16W J | | | R1542 | QRE121J-334Y | C R | 330kΩ 1/2W J | |
| | R1142 | NRSA63J-561X | MG R | 560Ω 1/16W J | | | R1543 | QRE121J-471Y | C R | 470Ω 1/2W J | |
| | R1143 | NRSA63J-471X | MG R | 470Ω 1/16W J | | | R1545 | QRE121J-220Y | C R | 22Ω 1/2W J | |
| | R1144 | NRSA63J-220X | MG R | 22Ω 1/16W J | | | R1546 | QRE121J-822Y | C R | 8.2kΩ 1/2W J | |
| | R1145 | NRSA63J-821X | MG R | 820Ω 1/16W J | | | R1591 | QRE121J-222Y | C R | 2.2kΩ 1/2W J | |
| | R1146 | NRSA63J-103X | MG R | 10kΩ 1/16W J | | | R1594 | QRE121J-223Y | C R | 22kΩ 1/2W J | |
| | R1147 | NRSA63J-101X | MG R | 100Ω 1/16W J | | | R1595 | NRSA63J-222X | MG R | 2.2kΩ 1/16W J | |
| | R1148 | NRSA63J-332X | MG R | 3.3kΩ 1/16W J | | | R1596 | QRT029J-1R8 | MF R | 1.8Ω 2W J | |
| | R1155 | NRSA63J-471X | MG R | 470Ω 1/16W J | | | R1597 | QRT029J-1R5 | MF R | 1.5Ω 2W J | |
| | R1301 | NRSA63J-222X | MG R | 2.2kΩ 1/16W J | | | R1621 | NRSA63J-0R0X | MG R | 0.0Ω 1/16W J | |
| | R1302 | NRSA63J-222X | MG R | 2.2kΩ 1/16W J | | | R1622 | NRSA63J-0R0X | MG R | 0.0Ω 1/16W J | |
| | R1303 | NRSA63J-562X | MG R | 5.6kΩ 1/16W J | | | R1624 | NRSA63J-101X | MG R | 100Ω 1/16W J | |
| | R1304 | NRSA63J-222X | MG R | 2.2kΩ 1/16W J | | | R1625 | NRSA63J-101X | MG R | 100Ω 1/16W J | |
| | R1305 | NRSA63J-222X | MG R | 2.2kΩ 1/16W J | | | R1627 | NRSA63J-102X | MG R | 1kΩ 1/16W J | |
| | R1306 | NRSA63J-562X | MG R | 5.6kΩ 1/16W J | | | R1650 | NRSA63J-103X | MG R | 10kΩ 1/16W J | |
| | R1312 | NRSA63J-331X | MG R | 330Ω 1/16W J | | | R1651 | NRSA63J-153X | MG R | 15kΩ 1/16W J | |
| | R1314 | NRSA63J-331X | MG R | 330Ω 1/16W J | | | R1654 | NRSA63J-103X | MG R | 10kΩ 1/16W J | |
| | R1315 | NRSA63J-333X | MG R | 33kΩ 1/16W J | | | R1655 | NRSA63J-153X | MG R | 15kΩ 1/16W J | |
| | R1316 | NRSA63J-682X | MG R | 6.8kΩ 1/16W J | | | R1658 | QRE121J-2R2Y | C R | 2.2Ω 1/2W J | |
| | R1350 | NRSA63J-151X | MG R | 150Ω 1/16W J | | | R1659 | QRE121J-2R2Y | C R | 2.2Ω 1/2W J | |
| | R1352 | QRL029J-123 | OM R | 12kΩ 2W J | | | R1660 | NRSA63J-103X | MG R | 10kΩ 1/16W J | |
| | R1353 | NRSA63J-182X | MG R | 1.8kΩ 1/16W J | | | R1661 | NRSA63J-683X | MG R | 68kΩ 1/16W J | |
| | R1354 | NRSA63J-331X | MG R | 330Ω 1/16W J | | | R1662 | NRSA63J-333X | MG R | 33kΩ 1/16W J | |
| | R1355 | NRSA63J-101X | MG R | 100Ω 1/16W J | | | R1663 | NRSA63J-103X | MG R | 10kΩ 1/16W J | |
| | R1356 | QRE121J-102Y | C R | 1kΩ 1/2W J | | | R1664 | NRSA63J-222X | MG R | 2.2kΩ 1/16W J | |
| | R1357 | QRZ0107-152Z | C R | 1.5kΩ 1W K | | | R1686 | NRSA63J-102X | MG R | 1kΩ 1/16W J | |
| | R1358 | QRE121J-272Y | C R | 2.7kΩ 1/2W J | | | R1687 | NRSA63J-103X | MG R | 10kΩ 1/16W J | |
| | R1359 | QRE121J-561Y | C R | 560Ω 1/2W J | | | R1688 | NRSA63J-273X | MG R | 27kΩ 1/16W J | |
| | R1360 | NRSA63J-151X | MG R | 150Ω 1/16W J | | | R1690 | NRSA63J-104X | MG R | 100kΩ 1/16W J | |
| | R1362 | QRL029J-123 | OM R | 12kΩ 2W J | | | R1698 | NRSA63J-104X | MG R | 100kΩ 1/16W J | |
| | R1363 | NRSA63J-182X | MG R | 1.8kΩ 1/16W J | | | R1699 | NRSA63J-104X | MG R | 100kΩ 1/16W J | |
| | R1364 | NRSA63J-331X | MG R | 330Ω 1/16W J | | | R1701 | NRSA63J-101X | MG R | 100Ω 1/16W J | |
| | R1365 | NRSA63J-101X | MG R | 100Ω 1/16W J | | | R1702 | NRSA63J-101X | MG R | 100Ω 1/16W J | |
| | R1366 | QRE121J-102Y | C R | 1kΩ 1/2W J | | | R1703 | NRSA63J-101X | MG R | 100Ω 1/16W J | |
| | R1367 | QRZ0107-152Z | C R | 1.5kΩ 1W K | | | R1704 | NRSA63J-102X | MG R | 1kΩ 1/16W J | |
| | R1368 | NRSA63J-332X | MG R | 3.3kΩ 1/16W J | | | R1705 | NRSA63J-102X | MG R | 1kΩ 1/16W J | |
| △ | R1369 | QRZ9017-150 | F R | 15Ω 1/4W J | | | R1706 | NRSA63J-102X | MG R | 1kΩ 1/16W J | |
| | R1370 | NRSA63J-151X | MG R | 150Ω 1/16W J | | | R1707 | NRSA63J-472X | MG R | 4.7kΩ 1/16W J | |
| | R1371 | QRL029J-123 | OM R | 12kΩ 2W J | | | R1708 | NRSA63J-472X | MG R | 4.7kΩ 1/16W J | |
| | R1372 | NRSA63J-182X | MG R | 1.8kΩ 1/16W J | | | R1709 | NRSA63J-472X | MG R | 4.7kΩ 1/16W J | |

| △ Symbol No. | Part No. | Part Name | Description | Local |
|-----------------|--------------|-----------|---------------|-------|
| RESISTOR | | | | |
| R1710 | NRSA63J-472X | MG R | 4.7kΩ 1/16W J | |
| R1711 | NRSA63J-101X | MG R | 100Ω 1/16W J | |
| R1712 | NRSA63J-101X | MG R | 100Ω 1/16W J | |
| R1713 | NRSA63J-101X | MG R | 100Ω 1/16W J | |
| R1714 | NRSA63J-101X | MG R | 100Ω 1/16W J | |
| R1715 | NRSA63J-103X | MG R | 10kΩ 1/16W J | |
| R1716 | NRSA63J-103X | MG R | 10kΩ 1/16W J | |
| R1717 | NRSA63J-103X | MG R | 10kΩ 1/16W J | |
| | | | | |
| R1718 | NRSA63J-221X | MG R | 220Ω 1/16W J | |
| R1719 | NRSA63J-221X | MG R | 220Ω 1/16W J | |
| R1720 | NRSA63J-102X | MG R | 1kΩ 1/16W J | |
| R1721 | NRSA63J-221X | MG R | 220Ω 1/16W J | |
| R1722 | NRSA63J-221X | MG R | 220Ω 1/16W J | |
| R1723 | NRSA63J-221X | MG R | 220Ω 1/16W J | |
| R1724 | NRSA63J-221X | MG R | 220Ω 1/16W J | |
| R1725 | NRSA63J-103X | MG R | 10kΩ 1/16W J | |
| | | | | |
| R1726 | NRSA63J-472X | MG R | 4.7kΩ 1/16W J | |
| R1727 | NRSA63J-104X | MG R | 100kΩ 1/16W J | |
| R1728 | NRSA63J-103X | MG R | 10kΩ 1/16W J | |
| R1729 | NRSA63J-470X | MG R | 47Ω 1/16W J | |
| R1730 | NRSA63J-223X | MG R | 22kΩ 1/16W J | |
| R1731 | NRSA63J-101X | MG R | 100Ω 1/16W J | |
| R1732 | NRSA02F-393X | MG R | 39kΩ 1/10W F | |
| R1733 | NRSA63J-273X | MG R | 27kΩ 1/16W J | |
| | | | | |
| R1734 | NRSA63J-391X | MG R | 390Ω 1/16W J | |
| R1735 | NRSA63J-104X | MG R | 100kΩ 1/16W J | |
| R1736 | NRSA63J-333X | MG R | 33kΩ 1/16W J | |
| R1737 | NRSA63J-272X | MG R | 2.7kΩ 1/16W J | |
| R1738 | NRSA63J-0R0X | MG R | 0.0Ω 1/16W J | |
| R1739 | NRSA63J-101X | MG R | 100Ω 1/16W J | |
| R1740 | NRSA63J-101X | MG R | 100Ω 1/16W J | |
| R1741 | NRSA63J-101X | MG R | 100Ω 1/16W J | |
| | | | | |
| R1742 | NRSA63J-0R0X | MG R | 0.0Ω 1/16W J | |
| R1743 | NRSA63J-681X | MG R | 680Ω 1/16W J | |
| R1744 | NRSA63J-561X | MG R | 560Ω 1/16W J | |
| R1745 | NRSA63J-105X | MG R | 1MΩ 1/16W J | |
| R1746 | NRSA63J-333X | MG R | 33kΩ 1/16W J | |
| R1747 | NRSA63J-103X | MG R | 10kΩ 1/16W J | |
| R1748 | NRSA02J-475X | MG R | 4.7MΩ 1/10W J | |
| R1749 | NRSA02J-475X | MG R | 4.7MΩ 1/10W J | |
| | | | | |
| R1750 | NRSA63J-0R0X | MG R | 0.0Ω 1/16W J | |
| R1755 | NRSA63J-101X | MG R | 100Ω 1/16W J | |
| R1756 | NRSA63J-101X | MG R | 100Ω 1/16W J | |
| R1757 | NRSA63J-222X | MG R | 2.2kΩ 1/16W J | |
| R1758 | NRSA63J-222X | MG R | 2.2kΩ 1/16W J | |
| R1760 | NRSA63J-682X | MG R | 6.8kΩ 1/16W J | |
| R1770 | QRE121J-271Y | C R | 270Ω 1/2W J | |
| R1771 | NRSA63J-102X | MG R | 1kΩ 1/16W J | |
| | | | | |
| R1772 | QRE121J-271Y | C R | 270Ω 1/2W J | |
| R1773 | NRSA63J-102X | MG R | 1kΩ 1/16W J | |
| R1775 | NRSA63J-332X | MG R | 3.3kΩ 1/16W J | |
| R1776 | NRSA63J-392X | MG R | 3.9kΩ 1/16W J | |
| R1777 | NRSA63J-682X | MG R | 6.8kΩ 1/16W J | |
| R1779 | NRSA63J-272X | MG R | 2.7kΩ 1/16W J | |
| R1780 | NRSA63J-471X | MG R | 470Ω 1/16W J | |
| R1781 | NRSA63J-122X | MG R | 1.2kΩ 1/16W J | |
| | | | | |
| R1782 | NRSA63J-181X | MG R | 180Ω 1/16W J | |
| R1783 | NRSA63J-221X | MG R | 220Ω 1/16W J | |
| R1784 | NRSA63J-331X | MG R | 330Ω 1/16W J | |
| R1785 | NRSA63J-471X | MG R | 470Ω 1/16W J | |
| R1786 | NRSA63J-202X | MG R | 2kΩ 1/16W J | |
| R1803 | NRSA63J-333X | MG R | 33kΩ 1/16W J | |
| R1804 | NRSA63J-750X | MG R | 75Ω 1/16W J | |
| R1805 | NRSA63J-750X | MG R | 75Ω 1/16W J | |
| | | | | |
| R1806 | NRSA63J-750X | MG R | 75Ω 1/16W J | |
| R1807 | NRSA63J-750X | MG R | 75Ω 1/16W J | |
| R1808 | NRSA63J-823X | MG R | 82kΩ 1/16W J | |
| R1809 | NRSA63J-391X | MG R | 390Ω 1/16W J | |
| R1810 | NRSA63J-823X | MG R | 82kΩ 1/16W J | |
| R1811 | NRSA63J-391X | MG R | 390Ω 1/16W J | |
| R1812 | NRSA63J-104X | MG R | 100kΩ 1/16W J | |
| R1813 | NRSA63J-222X | MG R | 2.2kΩ 1/16W J | |

| △ Symbol No. | Part No. | Part Name | Description | Local |
|-----------------|--------------|-----------|---------------|-------|
| RESISTOR | | | | |
| R1815 | NRSA63J-101X | MG R | 100Ω 1/16W J | |
| R1818 | NRSA63J-222X | MG R | 2.2kΩ 1/16W J | |
| R1820 | NRSA63J-101X | MG R | 100Ω 1/16W J | |
| R1821 | NRSA63J-222X | MG R | 2.2kΩ 1/16W J | |
| R1823 | NRSA63J-101X | MG R | 100Ω 1/16W J | |
| R1824 | NRSA63J-222X | MG R | 2.2kΩ 1/16W J | |
| R1826 | NRSA63J-101X | MG R | 100Ω 1/16W J | |
| R1829 | NRSA63J-750X | MG R | 75Ω 1/16W J | |
| | | | | |
| R1830 | NRSA63J-222X | MG R | 2.2kΩ 1/16W J | |
| R1831 | NRSA63J-222X | MG R | 2.2kΩ 1/16W J | |
| R1832 | NRSA63J-122X | MG R | 1.2kΩ 1/16W J | |
| R1833 | NRSA63J-102X | MG R | 1kΩ 1/16W J | |
| R1834 | NRSA63J-562X | MG R | 5.6kΩ 1/16W J | |
| R1835 | NRSA63J-562X | MG R | 5.6kΩ 1/16W J | |
| R1836 | NRSA63J-750X | MG R | 75Ω 1/16W J | |
| R1837 | NRSA63J-101X | MG R | 100Ω 1/16W J | |
| | | | | |
| R1838 | QRK126J-121X | UNF R | 120Ω 1/2W J | |
| R1839 | QRE121J-221Y | C R | 220Ω 1/2W J | |
| R1840 | QRE121J-221Y | C R | 220Ω 1/2W J | |
| R1841 | NRSA63J-0R0X | MG R | 0.0Ω 1/16W J | |
| R1842 | NRSA63J-0R0X | MG R | 0.0Ω 1/16W J | |
| R1843 | NRSA63J-821X | MG R | 820Ω 1/16W J | |
| R1844 | NRSA63J-222X | MG R | 2.2kΩ 1/16W J | |
| R1845 | NRSA63J-102X | MG R | 1kΩ 1/16W J | |
| | | | | |
| R1846 | NRSA63J-222X | MG R | 2.2kΩ 1/16W J | |
| R1847 | NRSA63J-103X | MG R | 10kΩ 1/16W J | |
| R1848 | NRSA63J-471X | MG R | 470Ω 1/16W J | |
| R1849 | NRSA63J-221X | MG R | 220Ω 1/16W J | |
| R1880 | NRSA63J-202X | MG R | 2kΩ 1/16W J | |
| R1881 | NRSA63J-103X | MG R | 10kΩ 1/16W J | |
| R1882 | NRSA63J-471X | MG R | 470Ω 1/16W J | |
| R1883 | NRSA63J-181X | MG R | 180Ω 1/16W J | |
| | | | | |
| R1902 | QRF154K-2R2 | UNF R | 2.2Ω 15W K | |
| R1904 | QRE121J-681Y | C R | 680Ω 1/2W J | |
| R1905 | QRM034J-R22 | MP R | 0.22Ω 3W J | |
| R1907 | NRSA63J-563X | MG R | 56kΩ 1/16W J | |
| R1908 | QRL039J-333 | OM R | 33kΩ 3W J | |
| R1909 | QRE121J-474Y | C R | 470kΩ 1/2W J | |
| R1910 | QRE121J-152Y | C R | 1.5kΩ 1/2W J | |
| R1911 | QRE121J-562Y | C R | 5.6kΩ 1/2W J | |
| | | | | |
| R1912 | NRSA63J-122X | MG R | 1.2kΩ 1/16W J | |
| R1913 | QRE121J-120Y | C R | 12Ω 1/2W J | |
| △ R1915 | QRZ0111-474 | C R | 470kΩ 1W K | |
| R1952 | NRSA63J-332X | MG R | 3.3kΩ 1/16W J | |
| R1953 | NRSA63J-101X | MG R | 100Ω 1/16W J | |
| R1957 | QRE121J-6R8Y | C R | 6.8Ω 1/2W J | |
| R1960 | NRSA63J-391X | MG R | 390Ω 1/16W J | |
| R1961 | QRL029J-183 | OM R | 18kΩ 2W J | |
| | | | | |
| R1962 | NRSA63J-561X | MG R | 560Ω 1/16W J | |
| R1963 | QRE121J-103Y | C R | 10kΩ 1/2W J | |
| R1964 | NRSA63J-473X | MG R | 47kΩ 1/16W J | |
| R1965 | NRSA63J-0R0X | MG R | 0.0Ω 1/16W J | |
| R1966 | NRSA63J-682X | MG R | 6.8kΩ 1/16W J | |
| R1967 | NRSA63J-473X | MG R | 47kΩ 1/16W J | |
| R1970 | NRSA63J-153X | MG R | 15kΩ 1/16W J | |
| R1971 | NRSA63J-183X | MG R | 18kΩ 1/16W J | |
| | | | | |
| R1972 | NRSA63J-391X | MG R | 390Ω 1/16W J | |
| △ R1991 | QRZ9046-825Z | C R | 8.2MΩ 1W J | |

CAPACITOR

| | | | | | |
|-------|--------------|---------|--------|-----|---|
| C1001 | NCB31HK-103X | C CAP. | 0.01μF | 50V | K |
| C1002 | QETN1HM-106Z | E CAP. | 10μF | 50V | M |
| C1003 | QFV71HJ-104Z | MF CAP. | 0.1μF | 50V | J |
| C1004 | QETN1CM-477Z | E CAP. | 470μF | 16V | M |
| C1005 | NCB31HK-222X | C CAP. | 2200pF | 50V | K |
| C1006 | QETN1CM-336Z | E CAP. | 33μF | 16V | M |
| C1007 | NCB31HK-103X | C CAP. | 0.01μF | 50V | K |
| C1101 | NCB31HK-472X | C CAP. | 4700pF | 50V | K |

| △ Symbol No. | Part No. | Part Name | Description | Local | △ Symbol No. | Part No. | Part Name | Description | Local |
|------------------|--------------|-----------|-------------|-----------|------------------|--------------|-----------|-------------|---------|
| CAPACITOR | | | | | CAPACITOR | | | | |
| C1102 | NCB31HK-472X | C CAP. | 4700pF | 50V K | C1634 | QETN1HM-475Z | E CAP. | 4.7μF | 50V M |
| C1103 | NCB31HK-472X | C CAP. | 4700pF | 50V K | C1635 | QETN1HM-107Z | E CAP. | 100μF | 50V M |
| C1104 | NCB31HK-472X | C CAP. | 4700pF | 50V K | C1636 | QETN1HM-475Z | E CAP. | 4.7μF | 50V M |
| C1105 | NCB31HK-472X | C CAP. | 4700pF | 50V K | C1637 | QETN1HM-475Z | E CAP. | 4.7μF | 50V M |
| C1106 | NDC21HJ-180X | C CAP. | 18pF | 50V J | C1638 | NCB31EK-104X | C CAP. | 0.1μF | 25V K |
| C1107 | NCB31HK-103X | C CAP. | 0.01μF | 50V K | C1639 | NCF21CZ-105X | C CAP. | 1μF | 16V Z |
| C1109 | QETN1HM-106Z | E CAP. | 10μF | 50V M | C1640 | QETN1HM-475Z | E CAP. | 4.7μF | 50V M |
| C1130 | NCB31HK-103X | C CAP. | 0.01μF | 50V K | C1641 | NCB31EK-104X | C CAP. | 0.1μF | 25V K |
| C1131 | NCB31HK-103X | C CAP. | 0.01μF | 50V K | C1642 | NCB31HK-472X | C CAP. | 4700pF | 50V K |
| C1132 | NCB31HK-103X | C CAP. | 0.01μF | 50V K | C1644 | QETN1HM-475Z | E CAP. | 4.7μF | 50V M |
| C1133 | QETN1CM-107Z | E CAP. | 100μF | 16V M | C1645 | QETN1HM-475Z | E CAP. | 4.7μF | 50V M |
| C1134 | NCB31HK-103X | C CAP. | 0.01μF | 50V K | C1650 | QEHR1HM-106Z | E CAP. | 10μF | 50V M |
| C1135 | QETN1AM-477Z | E CAP. | 470μF | 10V M | C1651 | QEHR1VM-476Z | E CAP. | 47μF | 35V M |
| C1136 | NCB31HK-103X | C CAP. | 0.01μF | 50V K | C1652 | QETN1HM-106Z | E CAP. | 10μF | 50V M |
| C1137 | NCB31HK-103X | C CAP. | 0.01μF | 50V K | C1655 | QEHQ1VM-108 | E CAP. | 1000μF | 35V M |
| C1138 | NCB31HK-103X | C CAP. | 0.01μF | 50V K | C1656 | QEHQ1VM-108 | E CAP. | 1000μF | 35V M |
| C1140 | NCB31HK-103X | C CAP. | 0.01μF | 50V K | C1659 | NCF21HZ-224X | C CAP. | 0.22μF | 50V Z |
| C1141 | NCB31HK-103X | C CAP. | 0.01μF | 50V K | C1660 | NCF21HZ-224X | C CAP. | 0.22μF | 50V Z |
| C1142 | NCB31HK-103X | C CAP. | 0.01μF | 50V K | C1661 | NCF21HZ-224X | C CAP. | 0.22μF | 50V Z |
| C1143 | QETN1HM-106Z | E CAP. | 10μF | 50V M | C1662 | QEHR1VM-227Z | E CAP. | 220μF | 35V M |
| C1144 | NCB31HK-223X | C CAP. | 0.022μF | 50V K | C1663 | NCF21HZ-224X | C CAP. | 0.22μF | 50V Z |
| C1308 | NCB31HK-103X | C CAP. | 0.01μF | 50V K | C1681 | QETN1CM-227Z | E CAP. | 220μF | 16V M |
| C1310 | NCB31HK-104X | C CAP. | 0.1μF | 50V K | C1682 | QETN1CM-227Z | E CAP. | 220μF | 16V M |
| C1313 | NCF31AZ-105X | C CAP. | 1μF | 10V Z | C1683 | QETN1CM-336Z | E CAP. | 33μF | 16V M |
| C1350 | NDC21HJ-471X | C CAP. | 470pF | 50V J | C1684 | QETN1HM-106Z | E CAP. | 10μF | 50V M |
| C1351 | NDC31HJ-681X | C CAP. | 680pF | 50V J | C1685 | NRSA63J-0R0X | MG R | 0.0Ω | 1/16W J |
| C1352 | QETN2EM-475Z | E CAP. | 4.7μF | 250V M | C1686 | NRSA63J-0R0X | MG R | 0.0Ω | 1/16W J |
| C1353 | QETN1HM-107Z | E CAP. | 100μF | 50V M | C1701 | QETN1CM-227Z | E CAP. | 220μF | 16V M |
| C1354 | QETN1HM-105Z | E CAP. | 1μF | 50V M | C1702 | QETN1HM-106Z | E CAP. | 10μF | 50V M |
| C1360 | NDC21HJ-471X | C CAP. | 470pF | 50V J | C1703 | NDC31HJ-330X | C CAP. | 33pF | 50V J |
| C1361 | NDC31HJ-681X | C CAP. | 680pF | 50V J | C1704 | NDC31HJ-330X | C CAP. | 33pF | 50V J |
| C1370 | NDC21HJ-471X | C CAP. | 470pF | 50V J | C1705 | NCB31HK-102X | C CAP. | 1000pF | 50V K |
| C1371 | NDC31HJ-821X | C CAP. | 820pF | 50V J | C1706 | NCB21EK-224X | C CAP. | 0.22μF | 25V K |
| C1372 | NRSA63J-273X | MG R | 27kΩ | 1/16W J | C1707 | QETN1CM-107Z | E CAP. | 100μF | 16V M |
| C1374 | QCZ0364-222 | C CAP. | 2200pF | 50V J | C1709 | QETN1CM-107Z | E CAP. | 100μF | 16V M |
| C1375 | QETN1CM-477Z | E CAP. | 470μF | 16V M | C1710 | NCB21EK-224X | C CAP. | 0.22μF | 25V K |
| C1401 | QETN1HM-105Z | E CAP. | 1μF | 50V M | C1711 | NCB31CK-104X | C CAP. | 0.1μF | 16V K |
| C1402 | QCB31HK-682Z | C CAP. | 6800pF | 50V K | C1713 | NCB31CK-104X | C CAP. | 0.1μF | 16V K |
| C1403 | QEHR1VM-227Z | E CAP. | 220μF | 35V M | C1714 | QETN1CM-476Z | E CAP. | 47μF | 16V M |
| C1406 | QFLC2AJ-683Z | M CAP. | 0.068μF | 100V J | C1720 | QETN1CM-476Z | E CAP. | 47μF | 16V M |
| C1407 | QCS32HJ-180Z | C CAP. | 18pF | 500V J | C1725 | NCB31HK-681X | C CAP. | 680pF | 50V K |
| C1408 | QFV71HJ-184Z | MF CAP. | 0.18μF | 50V J | C1730 | NCB21EK-224X | C CAP. | 0.22μF | 25V K |
| C1411 | NCF21HZ-334X | C CAP. | 0.33μF | 50V Z | C1731 | NCB21EK-224X | C CAP. | 0.22μF | 25V K |
| C1412 | NCF21HZ-334X | C CAP. | 0.33μF | 50V Z | C1732 | QETN1CM-107Z | E CAP. | 100μF | 16V M |
| C1413 | QFLC2AJ-563Z | M CAP. | 0.056μF | 100V J | C1733 | NCB31CK-104X | C CAP. | 0.1μF | 16V K |
| C1422 | QEHQ1VM-108 | E CAP. | 1000μF | 35V M | C1734 | NCB31HK-222X | C CAP. | 2200pF | 50V K |
| C1521 | QETN1VM-476Z | E CAP. | 47μF | 35V M | C1735 | NCB31HK-222X | C CAP. | 2200pF | 50V K |
| C1522 | QFLC1HJ-332Z | M CAP. | 3300pF | 50V J | C1736 | QETN1HM-105Z | E CAP. | 1μF | 50V M |
| C1523 | QFLC1HJ-223Z | M CAP. | 0.022μF | 50V J | C1737 | QETN1HM-105Z | E CAP. | 1μF | 50V M |
| C1524 | QFZ0200-942 | MPP CAP. | 9400pF | 1.5kVH±3% | C1738 | NCB31CK-104X | C CAP. | 0.1μF | 16V K |
| C1527 | QFZ0199-124 | MPP CAP. | 0.12μF | AC250V J | C1739 | NFV41CJ-104X | MPP CAP. | 0.1μF | 16V J |
| C1529 | QEHR2EM-475Z | E CAP. | 4.7μF | 250V M | C1740 | QETN1HM-225Z | E CAP. | 2.2μF | 50V M |
| C1530 | QCB32HK-561Z | C CAP. | 560pF | 500V K | C1741 | NCB31CK-104X | C CAP. | 0.1μF | 16V K |
| C1531 | QEHR1EM-108Z | E CAP. | 1000μF | 25V M | C1742 | NCB31CK-104X | C CAP. | 0.1μF | 16V K |
| C1533 | QEHR1EM-108Z | E CAP. | 1000μF | 25V M | C1743 | QETN1CM-107Z | E CAP. | 100μF | 16V M |
| C1535 | QCB32HK-101Z | C CAP. | 100pF | 500V K | C1744 | NCB31HK-102X | C CAP. | 1000pF | 50V K |
| C1536 | QFLC1HJ-103Z | M CAP. | 0.01μF | 50V J | C1745 | NCB31EK-473X | C CAP. | 0.047μF | 25V K |
| C1540 | QFV71HJ-104Z | MF CAP. | 0.1μF | 50V J | C1746 | NCB31EK-473X | C CAP. | 0.047μF | 25V K |
| C1541 | QETN2EM-226Z | E CAP. | 22μF | 250V M | C1747 | NCB31EK-473X | C CAP. | 0.047μF | 25V K |
| C1542 | QETN2EM-226Z | E CAP. | 22μF | 250V M | C1748 | QETN1CM-476Z | E CAP. | 47μF | 16V M |
| C1550 | NCB31CK-104X | C CAP. | 0.1μF | 16V K | C1749 | QETN1HM-106Z | E CAP. | 10μF | 50V M |
| C1591 | QETN1AM-107Z | E CAP. | 100μF | 10V M | C1751 | NCB31CK-104X | C CAP. | 0.1μF | 16V K |
| C1592 | QEZ0203-107 | E CAP. | 100μF | 160V M | C1752 | NCB31CK-104X | C CAP. | 0.1μF | 16V K |
| C1593 | QETN1EM-476Z | E CAP. | 47μF | 25V M | C1753 | NCB31CK-104X | C CAP. | 0.1μF | 16V K |
| C1625 | QETN1HM-475Z | E CAP. | 4.7μF | 50V M | C1760 | NCB31HK-104X | C CAP. | 0.1μF | 50V K |
| C1626 | QETN1HM-475Z | E CAP. | 4.7μF | 50V M | C1761 | QETN1CM-107Z | E CAP. | 100μF | 16V M |
| C1628 | NCB31HK-472X | C CAP. | 4700pF | 50V K | C1770 | QETN1HM-106Z | E CAP. | 10μF | 50V M |
| C1629 | NCB31EK-104X | C CAP. | 0.1μF | 25V K | C1801 | QETN1HM-106Z | E CAP. | 10μF | 50V M |
| C1630 | QETN1HM-475Z | E CAP. | 4.7μF | 50V M | C1802 | QETN1HM-106Z | E CAP. | 10μF | 50V M |
| C1631 | NCB31EK-104X | C CAP. | 0.1μF | 25V K | C1803 | QETN1HM-106Z | E CAP. | 10μF | 50V M |
| C1632 | QETN1HM-475Z | E CAP. | 4.7μF | 50V M | C1804 | QETN1HM-106Z | E CAP. | 10μF | 50V M |
| C1633 | QETN1HM-475Z | E CAP. | 4.7μF | 50V M | C1805 | NCB31HK-104X | C CAP. | 0.1μF | 50V K |

| △ Symbol No. | Part No. | Part Name | Description | Local |
|------------------|--------------|-----------|-----------------|-------|
| CAPACITOR | | | | |
| C1807 | NCF31AZ-105X | C CAP. | 1μF 10V Z | |
| C1808 | NCF31AZ-105X | C CAP. | 1μF 10V Z | |
| C1810 | NCF31AZ-105X | C CAP. | 1μF 10V Z | |
| C1811 | NCB31HK-104X | C CAP. | 0.1μF 50V K | |
| C1812 | NCF31AZ-105X | C CAP. | 1μF 10V Z | |
| C1813 | NCB31HK-103X | C CAP. | 0.01μF 50V K | |
| C1814 | NCB31HK-104X | C CAP. | 0.1μF 50V K | |
| C1815 | NCF31AZ-105X | C CAP. | 1μF 10V Z | |
| C1817 | NCF31AZ-105X | C CAP. | 1μF 10V Z | |
| C1819 | NCB31HK-104X | C CAP. | 0.1μF 50V K | |
| C1820 | NCF31AZ-105X | C CAP. | 1μF 10V Z | |
| C1821 | NCF31AZ-105X | C CAP. | 1μF 10V Z | |
| C1822 | QETN1CM-477Z | E CAP. | 470μF 16V M | |
| C1823 | QETN1CM-107Z | E CAP. | 100μF 16V M | |
| C1824 | QETN1CM-107Z | E CAP. | 100μF 16V M | |
| C1825 | NCB31HK-103X | C CAP. | 0.01μF 50V K | |
| C1826 | NCB31HK-104X | C CAP. | 0.1μF 50V K | |
| C1827 | NCB31HK-103X | C CAP. | 0.01μF 50V K | |
| C1829 | NCB31HK-103X | C CAP. | 0.01μF 50V K | |
| C1830 | NCB31HK-103X | C CAP. | 0.01μF 50V K | |
| C1831 | NCB31HK-103X | C CAP. | 0.01μF 50V K | |
| C1833 | QETN1HM-226Z | E CAP. | 22μF 50V M | |
| C1834 | NDC31HJ-181X | C CAP. | 180pF 50V J | |
| △ C1901 | QFZ9075-224 | MPP CAP. | 0.22μF | |
| △ C1902 | QFZ9075-104 | MPP CAP. | 0.1μF | |
| C1903 | QCZ9015-102Z | C CAP. | 1000pF AC250V Z | |
| C1904 | QCZ9015-102Z | C CAP. | 1000pF AC250V Z | |
| C1905 | QCZ9015-102Z | C CAP. | 1000pF AC250V Z | |
| △ C1906 | QFZ9072-224 | MM CAP. | 0.22μF | |
| C1907 | QEZ0552-227 | E CAP. | 220μF | |
| C1908 | QFZ0209-222 | MPP CAP. | 2200pF | |
| C1910 | NDC31HJ-471X | C CAP. | 470pF 50V J | |
| C1911 | QEHR1EM-227Z | E CAP. | 220μF 25V M | |
| C1914 | QETN1EM-227Z | E CAP. | 220μF 25V M | |
| C1915 | QFLC1HJ-222Z | M CAP. | 2200pF 50V J | |
| C1952 | QCB32HK-471Z | C CAP. | 470pF 500V K | |
| C1953 | QEHQ1VM-108 | E CAP. | 1000μF 35V M | |
| C1954 | NCB31HK-102X | C CAP. | 1000pF 50V K | |
| C1957 | QCB32HK-471Z | C CAP. | 470pF 500V K | |
| C1958 | QEHQ1EM-228 | E CAP. | 2200μF 25V M | |
| C1959 | QCZ0364-561 | C CAP. | 560pF | |
| C1960 | QEZ0203-107 | E CAP. | 100μF 160V M | |
| C1961 | QETN1HM-225Z | E CAP. | 2.2μF 50V M | |
| C1962 | QETN1HM-106Z | E CAP. | 10μF 50V M | |
| C1964 | QETN1CM-476Z | E CAP. | 47μF 16V M | |
| C1965 | QETN1HM-225Z | E CAP. | 2.2μF 50V M | |
| C1968 | NCB31CK-104X | C CAP. | 0.1μF 16V K | |
| C1972 | QEHR1VM-476Z | E CAP. | 47μF 35V M | |
| C1973 | QEHR1CM-107Z | E CAP. | 100μF 16V M | |
| C1974 | NCB31CK-104X | C CAP. | 0.1μF 16V K | |
| C1975 | QEHR1CM-227Z | E CAP. | 220μF 16V M | |
| C1976 | QEHR1CM-107Z | E CAP. | 100μF 16V M | |
| C1977 | QEHR1AM-477Z | E CAP. | 470μF 10V M | |
| C1978 | NCB31HK-104X | C CAP. | 0.1μF 50V K | |
| C1980 | QETN1CM-107Z | E CAP. | 100μF 16V M | |
| △ C1991 | QCZ9079-102 | C CAP. | 1000pF AC250V M | |
| △ C1992 | QCZ9079-102 | C CAP. | 1000pF AC250V M | |
| △ C1993 | QCZ9079-152 | C CAP. | 1500pF AC250V M | |

TRANSFORMER

| | | |
|---------|---------------|--------------|
| T1521 | CE40203-00CJ1 | DRIVE TRANSF |
| △ T1551 | QQH0142-001 | FB TRANSF |
| △ T1901 | QQS0182-001 | SW TRANSF |

| △ Symbol No. | Part No. | Part Name | Description | Local |
|--------------|----------------|-----------------|--------------|-------|
| COIL | | | | |
| L1001 | CE42050-001Z | BEADS CORE | | |
| L1002 | CE42050-001Z | BEADS CORE | | |
| L1101 | QQLZ014-R82 | COIL | 0.82μH | |
| L1104 | QQL244K-180Z | COIL | 18μH | K |
| L1523 | QQR1005-002 | LINEARITY COIL | | |
| L1524 | QQLZ018-760 | COIL | 76μH | |
| L1701 | QQL244K-100Z | COIL | 10μH | K |
| L1702 | QQL244K-100Z | COIL | 10μH | K |
| L1731 | QQL244J-5R6Z | COIL | 5.6μH | J |
| L1732 | QQL244J-5R6Z | COIL | 5.6μH | J |
| L1951 | QQLZ034-460 | COIL | 46μH | |
| L1953 | QQL244J-5R6Z | COIL | 5.6μH | J |
| L1954 | QQL244J-5R6Z | COIL | 5.6μH | J |
| DIODE | | | | |
| D1101 | ISS268-X | SI. DIODE | | |
| D1350 | 1SS244-T2 | SI. DIODE | | |
| D1352 | RGP10J-5025-T3 | SI. DIODE | | |
| D1353 | MA111-X | SI. DIODE | | |
| D1354 | MA111-X | SI. DIODE | | |
| D1355 | MA111-X | SI. DIODE | | |
| D1356 | MA111-X | SI. DIODE | | |
| D1357 | MA111-X | SI. DIODE | | |
| D1358 | MA111-X | SI. DIODE | | |
| D1360 | 1SS244-T2 | SI. DIODE | | |
| D1370 | 1SS244-T2 | SI. DIODE | | |
| D1372 | MA3075/M/-X | ZENER DIODE | | |
| D1373 | MA111-X | SI. DIODE | | |
| D1374 | MA111-X | SI. DIODE | | |
| D1401 | RGP10J-5025-T3 | SI. DIODE | | |
| D1402 | MTZJ75-T2 | ZENER DIODE | | |
| D1405 | 1N4003-T2 | SI. DIODE | | |
| D1408 | MA111-X | SI. DIODE | | |
| D1523 | RGP10J-5025-T3 | SI. DIODE | | |
| D1541 | RGP10J-5025-T3 | SI. DIODE | | |
| D1550 | MA111-X | SI. DIODE | | |
| D1551 | RGP10J-5025-T3 | SI. DIODE | | |
| D1553 | RGP10J-5025-T3 | SI. DIODE | | |
| D1554 | RGP10J-5025-T3 | SI. DIODE | | |
| D1592 | MA3075/H/-X | ZENER DIODE | | |
| D1652 | MA3330/L/-X | ZENER DIODE | | |
| D1653 | MA3330/L/-X | ZENER DIODE | | |
| D1655 | MA111-X | SI. DIODE | | |
| D1682 | MA111-X | SI. DIODE | | |
| D1702 | MA3024-X | ZENER DIODE | | |
| D1703 | MA3051/M/-X | ZENER DIODE | | |
| D1704 | MA3033-X | ZENER DIODE | | |
| D1730 | MA111-X | SI. DIODE | | |
| D1731 | MA111-X | SI. DIODE | | |
| D1732 | MA111-X | SI. DIODE | | |
| D1733 | MA111-X | SI. DIODE | | |
| D1760 | SLR-342VR-T16 | LED | | |
| D1761 | SLR-342MC-T16 | LED | | |
| D1770 | MA111-X | SI. DIODE | | |
| D1771 | P1241-04 | PHOTO CONDUCTOR | | |
| D1801 | MA3120/M/-X | ZENER DIODE | | |
| D1802 | MA3120/M/-X | ZENER DIODE | | |
| D1807 | MA3100/M/-X | ZENER DIODE | | |
| D1808 | MA3100/M/-X | ZENER DIODE | | |
| D1901 | GSIB460 | BRIDGE DIODE | | |
| D1903 | MTZJ12C-T2 | ZENER DIODE | | |
| D1904 | EG01C-T2 | SI. DIODE | | |
| D1906 | EG01C-T2 | SI. DIODE | | |
| D1907 | MA3150/M/-X | ZENER DIODE | | |
| D1908 | MTZJ27B-T2 | ZENER DIODE | | |
| D1909 | MA111-X | SI. DIODE | | |
| D1910 | NRSA63J-0R0X | MG R | 0.0Ω 1/16W J | |
| D1911 | RGP10J-TS-T3 | SI. DIODE | | |
| D1912 | 1SS133-T2 | SI. DIODE | | |
| D1914 | ERC30-02L38 | SI. DIODE | | |
| D1952 | ERC30-02L38 | SI. DIODE | | |

| △ Symbol No. | Part No. | Part Name | Description | Local | △ Symbol No. | Part No. | Part Name | Description | Local |
|-------------------|-----------------|------------------|-------------|-------|----------------|-----------------|------------------|-------------|-------|
| DIODE | | | | | IC | | | | |
| D1954 | RGP30B-F1 | SI. DIODE | | | IC1130 | M52342SP | I.C(MONO-ANA) | | |
| D1956 | RU3AM-LFC4 | SI. DIODE | | | IC1401 | AN5522 | I.C(MONO-ANA) | | |
| D1964 | MA3330/L-X | ZENER DIODE | | | IC1602 | NJW1138M-X | I.C(MONO-ANA) | | |
| D1965 | 1SS133-T2 | SI. DIODE | | | IC1650 | AN5276 | I.C(MONO-ANA) | | |
| D1966 | MA3068/M-X | ZENER DIODE | | | IC1701 | TDA9386N22S0902 | I.C(MCU) | | |
| D1968 | MA111-X | SI. DIODE | | | IC1702 | AT24C08-21WS3 | I.C(MEMORY-OTH) | (SERVICE) | |
| D1969 | MA111-X | SI. DIODE | | | IC1760 | GP1UM281QK | IR DETECT UNIT | | |
| D1971 | MA111-X | SI. DIODE | | | IC1801 | MM1492AF | I.C(MONO-ANA) | | |
| TRANSISTOR | | | | | IC1901 | STR-F6707A/F7 | I.C(HYBRID) | | |
| Q1101 | 2SC5083/L-P/-T | TRANSISTOR | | | IC1951 | SE115N-LF12 | I.C(HYBRID) | | |
| Q1102 | UN2212-X | DIGI. TRANSISTOR | | | IC1972 | R1141Q331B-X | REGULATE | | |
| Q1104 | 2SB709A/QR/-X | TRANSISTOR | | | IC1974 | AN80T36 | REG I.C | | |
| Q1105 | UN2212-X | DIGI. TRANSISTOR | | | OTHERS | | | | |
| Q1106 | UN2212-X | DIGI. TRANSISTOR | | | LC30114-001C-H | LED HOLDER | | | |
| Q1108 | 2SD601A/QR/-X | TRANSISTOR | | | CM35921-B02 | CDS HOLDER | | | |
| Q1109 | 2SB709A/QR/-X | TRANSISTOR | | | QAX0639-001Z | C TRAP | | | |
| Q1110 | UN2212-X | DIGI. TRANSISTOR | | | CF1106 | QAX0642-001Z | C FILTER | | |
| Q1111 | 2SD601A/QR/-X | TRANSISTOR | | | CF1130 | QAX0695-001Z | C FILTER | | |
| Q1130 | 2SB709A/QR/-X | TRANSISTOR | | | CF1140 | QAX0697-001Z | C FILTER | | |
| Q1131 | UN2212-X | DIGI. TRANSISTOR | | | CF1142 | QAX0697-001Z | C FILTER | | |
| Q1132 | 2SD601A/QR/-X | TRANSISTOR | | | CL1001 | QZW0027-002 | WIRE CLAMP | | |
| Q1133 | 2SB709A/QR/-X | TRANSISTOR | | | CL1002 | QZW0027-001 | WIRE CLAMP | | |
| Q1134 | UN2212-X | DIGI. TRANSISTOR | | | CL1003 | QZW0027-004 | WIRE CLAMP | | |
| Q1135 | UN2212-X | DIGI. TRANSISTOR | | | △ CP1951 | ICP-N75-Y | IC PROTECTOR | | |
| Q1136 | 2SD601A/QR/-X | TRANSISTOR | | | △ CP1953 | ICP-N75-Y | IC PROTECTOR | | |
| Q1137 | 2SD601A/QR/-X | TRANSISTOR | | | △ F1901 | QMF51E2-4R0J4 | FUSE | | |
| Q1301 | 2SB709A/QR/-X | TRANSISTOR | | | FC1901 | CEMG002-001Z | FUSE CLIP | | |
| Q1302 | 2SB709A/QR/-X | TRANSISTOR | | | J1770 | QNS0155-001 | 3.5 JACK | | |
| Q1305 | 2SC2412K/QR/-X | TRANSISTOR | | | J1771 | QNN0282-003 | PIN JACK | | |
| Q1306 | 2SC2412K/QR/-X | TRANSISTOR | | | J1772 | QNN0282-002 | PIN JACK | | |
| Q1307 | 2SA1037AK/QR/-X | TRANSISTOR | | | J1773 | QNN0282-001 | PIN JACK | | |
| Q1350 | STC344-T | TRANSISTOR | | | J1801 | QNN0349-001 | PIN JACK | | |
| Q1351 | 2SA1321-T | TRANSISTOR | | | J1802 | QNN0349-002 | PIN JACK | | |
| Q1352 | 2SB709A/QR/-X | TRANSISTOR | | | J1803 | QNN0348-001 | PIN JACK | | |
| Q1360 | STC344-T | TRANSISTOR | | | J1804 | QNN0349-001 | PIN JACK | | |
| Q1361 | 2SA1321-T | TRANSISTOR | | | K1104 | QQR1113-001Z | FERRITE BEADS | | |
| Q1370 | STC344-T | TRANSISTOR | | | K1105 | QQR1113-001Z | FERRITE BEADS | | |
| Q1371 | 2SA1321-T | TRANSISTOR | | | K1106 | QQR1113-001Z | FERRITE BEADS | | |
| Q1374 | 2SD601A/QR/-X | TRANSISTOR | | | K1401 | CE42050-001Z | BEADS CORE | | |
| Q1375 | 2SD601A/QR/-X | TRANSISTOR | | | K1701 | QQR1113-001Z | FERRITE BEADS | | |
| Q1376 | 2SD601A/QR/-X | TRANSISTOR | | | K1902 | QQR1114-001Z | FERRITE BEADS | | |
| Q1521 | 2SC2655/Y/-T | TRANSISTOR | | | K1903 | QQR1114-001Z | FERRITE BEADS | | |
| Q1522 | 2SD2634-YD | POWER TRANSISTOR | | | K1951 | QQR1113-001Z | FERRITE BEADS | | |
| Q1591 | 2SA1208/ST/Z1-T | TRANSISTOR | | | K1954 | QQR1113-001Z | FERRITE BEADS | | |
| Q1592 | UN2212-X | DIGI. TRANSISTOR | | | K1955 | QQR1214-001Y | FERRITE BEADS | | |
| Q1660 | 2SD601A/QR/-X | TRANSISTOR | | | △ LF1902 | QQR1035-001 | LINE FILTER | | |
| Q1661 | 2SD601A/QR/-X | TRANSISTOR | | | △ PC1901 | PC123F2 | IC(PHOTO COUPLE) | | |
| Q1683 | 2SB709A/QR/-X | TRANSISTOR | | | △ RY1901 | QSK0092-001 | RELAY | | |
| Q1684 | 2SB709A/QR/-X | TRANSISTOR | | | S1780 | QSW0619-003Z | TACT SWITCH | MENU | |
| Q1685 | DTC323TK-X | DIGI. TRANSISTOR | | | S1781 | QSW0619-003Z | TACT SWITCH | CH- | |
| Q1686 | DTC323TK-X | DIGI. TRANSISTOR | | | S1782 | QSW0619-003Z | TACT SWITCH | CH+ | |
| Q1701 | 2SB709A/QR/-X | TRANSISTOR | | | S1783 | QSW0619-003Z | TACT SWITCH | VOL- | |
| Q1702 | 2SB709A/QR/-X | TRANSISTOR | | | S1784 | QSW0619-003Z | TACT SWITCH | VOL+ | |
| Q1703 | FMC2A-X | D.TRANSISTOR | | | △ S1901 | QSW0846-001 | PUSH SWITCH | POWER | |
| Q1720 | 2SB709A/QR/-X | TRANSISTOR | | | SF1101 | QAX0325-001 | SAW FILTER | | |
| Q1770 | 2SB709A/QR/-X | TRANSISTOR | | | SF1102 | QAX0731-001 | SAW FILTER | | |
| Q1801 | DTC323TK-X | DIGI. TRANSISTOR | | | △ SK1351 | QNZ0537-001 | CRT SOCKET | | |
| Q1802 | DTC323TK-X | DIGI. TRANSISTOR | | | TH1901 | QAD0134-4R5 | P THERMISTOR | | |
| Q1803 | 2SB709A/QR/-X | TRANSISTOR | | | TU1001 | QAU0186-002 | TUNER | | |
| Q1804 | 2SC1740S/QR/-T | TRANSISTOR | | | △ VA1901 | QAF0052-621 | VARISTOR | | |
| Q1860 | 2SD601A/QR/-X | TRANSISTOR | | | W1010 | NRSA63J-0R0X | MG R | 0.0Ω 1/16W | J |
| Q1861 | 2SB709A/QR/-X | TRANSISTOR | | | W1052 | NRSA63J-0R0X | MG R | 0.0Ω 1/16W | J |
| Q1862 | 2SB709A/QR/-X | TRANSISTOR | | | W1071 | NRSA63J-0R0X | MG R | 0.0Ω 1/16W | J |
| Q1952 | 2SD601A/QR/-X | TRANSISTOR | | | W1096 | NRSA63J-0R0X | MG R | 0.0Ω 1/16W | J |
| Q1953 | 2SD601A/QR/-X | TRANSISTOR | | | W1239 | NRSA63J-0R0X | MG R | 0.0Ω 1/16W | J |
| Q1954 | 2SD601A/QR/-X | TRANSISTOR | | | W1257 | NRSA63J-0R0X | MG R | 0.0Ω 1/16W | J |
| | | | | | W1307 | NRSA63J-0R0X | MG R | 0.0Ω 1/16W | J |
| | | | | | W1309 | NRSA63J-0R0X | MG R | 0.0Ω 1/16W | J |
| | | | | | W1317 | NRSA63J-0R0X | MG R | 0.0Ω 1/16W | J |
| | | | | | W1322 | NRSA63J-0R0X | MG R | 0.0Ω 1/16W | J |

| △ Symbol No. | Part No. | Part Name | Description | Local |
|---------------|--------------|-----------|-------------|-------|
| OTHERS | | | | |
| W1325 | NRSA63J-0R0X | MG R | 0.0Ω 1/16W | J |
| W1326 | NRSA63J-0R0X | MG R | 0.0Ω 1/16W | J |
| W1330 | NRSA63J-0R0X | MG R | 0.0Ω 1/16W | J |
| W1333 | NRSA63J-0R0X | MG R | 0.0Ω 1/16W | J |
| W1375 | NRSA63J-0R0X | MG R | 0.0Ω 1/16W | J |
| W1379 | NRSA63J-0R0X | MG R | 0.0Ω 1/16W | J |
| W1388 | NRSA63J-0R0X | MG R | 0.0Ω 1/16W | J |
| W1417 | NRSA63J-0R0X | MG R | 0.0Ω 1/16W | J |
| W1418 | NRSA63J-0R0X | MG R | 0.0Ω 1/16W | J |
| W1430 | NRSA63J-0R0X | MG R | 0.0Ω 1/16W | J |
| X1701 | QAX0737-001 | CRYSTAL | | |
| Y1001 | NRSA63J-0R0X | MG R | 0.0Ω 1/16W | J |
| Y1002 | NRSA63J-0R0X | MG R | 0.0Ω 1/16W | J |
| Y1005 | NRSA63J-0R0X | MG R | 0.0Ω 1/16W | J |
| Y1130 | NRSA63J-0R0X | MG R | 0.0Ω 1/16W | J |
| Y1601 | NRSA63J-0R0X | MG R | 0.0Ω 1/16W | J |
| Y1604 | NRSA63J-0R0X | MG R | 0.0Ω 1/16W | J |

| △ Symbol No. | Part No. | Part Name | Description | Local |
|--------------|----------|-----------|-------------|-------|
|--------------|----------|-----------|-------------|-------|

DIFFERENCE PARTS LIST BETWEEN AV-21D83/VT AND AV-20N83/VT

In the DIFFERENCE PARTS LIST BETWEEN AV-21D83/VT and AV-20N83/VT, only difference points between these models are written. For other parts not mentioned in the list, please refer to the PARTS LIST (P55 – P60) for the AV-20N83/VT.

DIFFERENCE PARTS LIST

| △ | Symbol No. | Part No. | | Part Name |
|---|------------|---------------------------------|---------------------------------|-----------------|
| | | AV-21D83/VT | AV-20N83/VT | |
| | | SCH-1315A-CK | SCH-1316A-CK | MAIN PWB |
| | R1413 | QRX01GJ-3R3 (3.3Ω, 1W, J) | QRX01GJ-3R9 (3.9Ω, 1W, J) | MF R |
| | R1414 | QRE121J-220Y (22Ω, 1/2W, J) | QRE121J-390Y (39Ω, 1/2W, J) | CR |
| | C1524 | QFZ0200-902 (9000pF, 1.5kVH±3%) | QFZ0200-942 (9400pF, 1.5kVH±3%) | MPP CAP |
| | C1527 | QFZ0199-564 (0.56μF, AC250V, J) | QFZ0199-124 (0.12μF, AC250V, J) | MPP CAP |

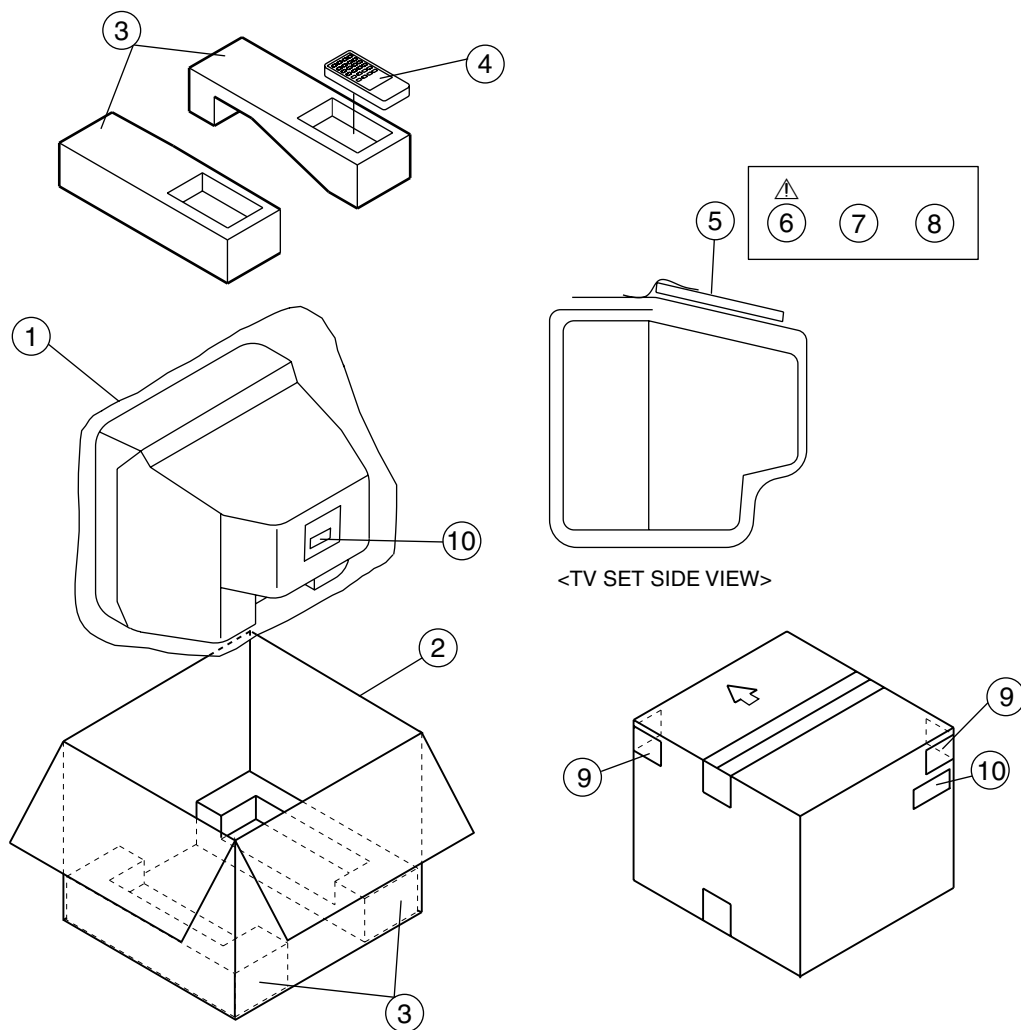
REMOTE CONTROL UNIT PARTS LIST

RM-C1017-1H [AV-20N83/BK, AV-21D83/BK]

RM-C1027-1H [AV-21D83/VT, AV-20N83/VT]

| △ | Ref. No. | Part No. | Part Name | Description | Local |
|---|----------|----------|---------------|-------------|-------|
| | | 25-1168F | BATTERY COVER | | |

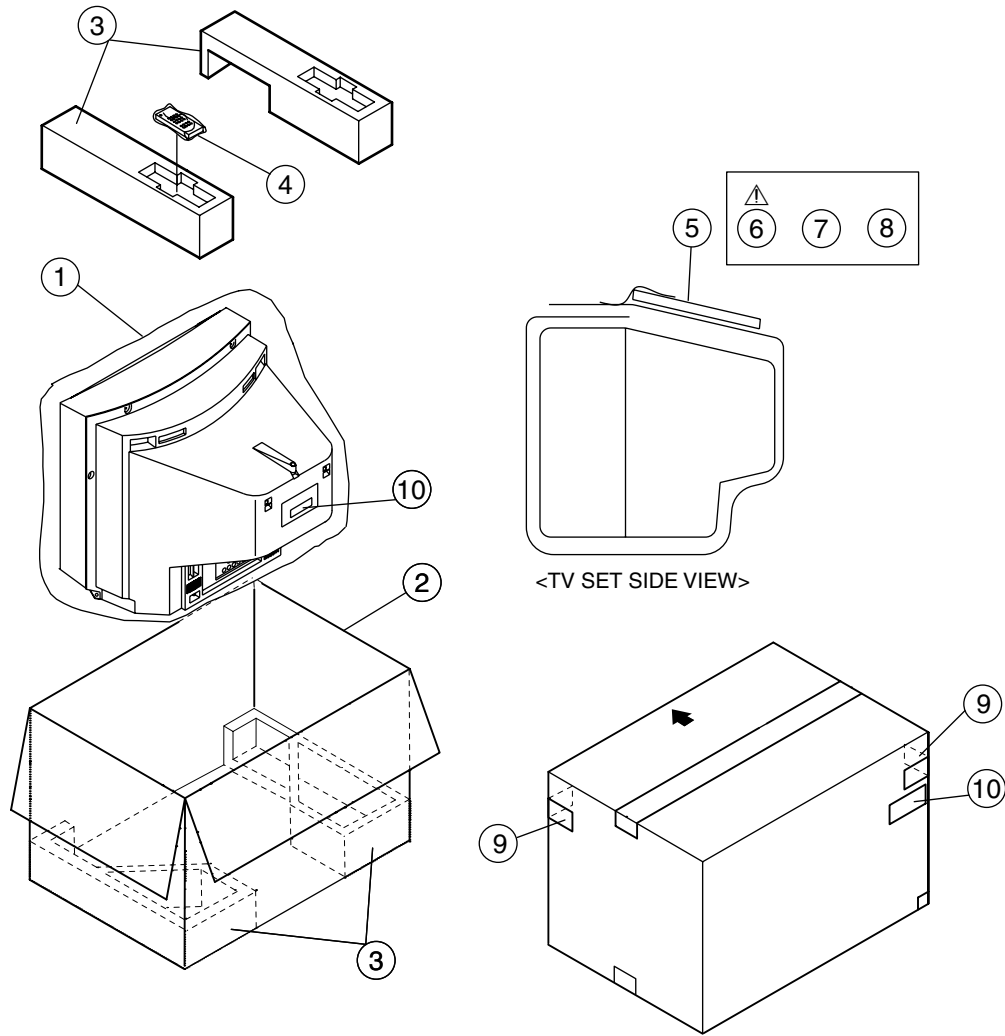
PACKING [AV-20N83/BK, AV-20N83/VT]



PACKING PARTS LIST [AV-20N83/BK, AV-20N83/VT]

| ▲ Ref.No. | Part No. | Part Name | Description | Local |
|-----------|----------------|--------------|--------------------|-------|
| 1 | CP30967-003-H | POLY BAG | [AV-20N83/BK] | |
| 1 | GG30033-001A-E | POLY BAG | [AV-20N83/VT] | |
| 2 | GG10056-075A-H | P CASE | [AV-20N83/BK] | |
| 2 | GG10007-024A-E | P CASE | [AV-20N83/VT] | |
| 3 | LC10469-002A-H | CUSHION ASSY | [AV-20N83/BK] | |
| 3 | LC10469-004A | CUSHION ASSY | [AV-20N83/VT] | |
| 4 | RM-C1017-1H | RC HAND UNIT | | |
| 5 | CP30966-001-H | POLY BAG | [AV-20N83/BK] | |
| 5 | GG30034-001A-E | POLY BAG | [AV-20N83/VT] | |
| ▲ 6 | LCT1204-001A-H | INST BOOK | [AV-20N83/BK] | |
| ▲ 6 | LCT1211-001A | INST BOOK | [AV-20N83/VT] | |
| 7 | ATEAB001-00A | MATCHING BOX | [AV-20N83/BK] | |
| 7 | CEAB005-00AJ1 | MATCHING BOX | [AV-20N83/VT] | |
| 8 | CM35847-00B-H | ROD ANTENNA | [AV-20N83/VT] | |
| 9 | GG20025-003A-H | CORNER LABEL | (x2) [AV-20N83/BK] | |
| 10 | GG40015-001A-E | SERIAL LABEL | (x2) [AV-20N83/VT] | |

PACKING [AV-21D83/BK, AV-21D83/VT]



PACKING PARTS LIST [AV-21D83/BK, AV-21D83/VT]

| △ Ref.No. | Part No. | Part Name | Description | Local |
|-----------|----------------|--------------|--------------------|-------|
| 1 | CP30967-003-H | POLY BAG | [AV-21D83/BK] | |
| 1 | GG30033-001A-E | POLY BAG | [AV-21D83/VT] | |
| 2 | GG10056-078A-H | P CASE | [AV-21D83/BK] | |
| 2 | GG10007-025A-E | P CASE | [AV-21D83/VT] | |
| 3 | GG10131-001B-H | CUSHION ASSY | [AV-21D83/BK] | |
| 3 | GG10131-003A-E | CUSHION ASSY | [AV-21D83/VT] | |
| 4 | RM-C1027-1H | RC HAND UNIT | | |
| 5 | CP30966-001-H | POLY BAG | [AV-21D83/BK] | |
| △ 5 | GG30034-001A-E | POLY BAG | [AV-21D83/VT] | |
| △ 6 | LCT1204-001A-H | INST BOOK | [AV-21D83/BK] | |
| △ 6 | LCT1211-001A | INST BOOK | [AV-21D83/VT] | |
| 7 | ATEAB001-00A | MATCHING BOX | [AV-21D83/BK] | |
| 7 | CEAB005-00AJ1 | MATCHING BOX | [AV-21D83/VT] | |
| 8 | CM35847-00B-H | ROD ANTENNA | [AV-21D83/VT] | |
| 9 | GG20025-003A-H | CORNER LABEL | (x2) [AV-21D83/BK] | |
| 10 | GG40015-001A-E | SERIAL LABEL | (x2) [AV-21D83/VT] | |